

LAND SUITABILITY ASSESSMENT FOR DISTRIBUTED SOLAR ENERGY

VILLUPURAM DISTRICT,
TAMIL NADU

MARCH 2023

Solar

LAND SUITABILITY ASSESSMENT FOR DISTRIBUTED SOLAR ENERGY

VILLUPURAM DISTRICT,
TAMIL NADU

MARCH 2023



Solar

This publication forms part of the Sustainable Energy Transformation, Tamil Nadu (SET-TN) series of documents and activities. SET-TN aims to facilitate higher clean energy deployment in the state by working with all stakeholders to find sustainable and equitable solutions. SET-TN is a collaborative initiative by Auroville Consulting (AVC), Citizen Consumer and civic Action Group (CAG) and the World Resources Institute India (WRI).

Authors:

Athithiyan. M.R
Martin Scherfler
Nilima Dharanipragada
Dr. Sukanya Randhawa

Designer:

Thiagarajan Rajendiran, Auroville Consulting

Suggested Citation: Auroville Consulting. 2023.
Land suitability assessment for distributed solar energy,
Villupuram District, Tamil Nadu.

Available at:
<https://www.aurovilleconsulting.com/land-suitability-assessment-for-distributed-solar-energy-villupuram-district/>

ABOUT LILA

LifeLands (LiLa) is an innovative digital tool that uses satellite imagery, AI & GIS Mapping and (i) creates land-cover maps at high spatial resolution for any area of interest, (ii) detects degraded/unused lands and (iii) evaluates these lands in regards to climate mitigation and adaptation interventions such as sustainable water management, reforestation and solar energy generation.

Examples on how Lila can be used:

- It can detect degraded lands with high spatial resolution and shortlist lands that are best suited to meet India's reforestation target.
- It can undertake a high level water demand assessment of any area of interest and identify best locations for surface and ground water management.
- It can monitor land-use change over time and help in reporting increase or decrease in forest cover.
- It can identify degraded lands that are best suited for distributed solar energy to meet energy security targets and inform utilities and project developers.
- It can inform land-use and zoning exercise at the local and state level.
- It combines socio-environmental and advanced physical terrain analysis to generate blueprints for sustainable rural development

Solar

KEY FINDINGS

TOTAL GEOGRAPHICAL AREA

3,907 km²

UNUSED LAND

1,092 km²

Villupuram, district has a total geographical area of 3,907 km² of which 1,092 km² or 28% has been classified as unused or fallow lands.



SOLAR TARGET

The district's solar energy target has been set as a proportional share of the state's solar energy capacity addition target of 20 GW by 2030. The district's target is to add 0.62 GW of solar energy by 2030. This requires a land area of 2,465 acres.

0.62 GW solar PV

2,465 acres



TECHNICAL POTENTIAL

The suitability analysis revealed that 92,149 acres of unused land have a technical potential for ground mounted solar energy development. These lands are distributed over 3,084 plots. The suitable lands identified can accommodate up to 23.04 GW of solar capacity, this would help achieving a whopping 3,738% of (or 37 times) the district's solar capacity addition target.

23.04 GW solar PV

92,149 acres

3,084 plots

3,738% of target



HIGHEST POTENTIAL

Unused lands that have the highest commercial potential for solar energy deployment account for 33,858 acres and can accommodate a solar energy capacity of 8.46 GW.

8.46 GW solar PV

33,858 acres

103 plots

1,373% of target

TABLE OF CONTENTS

01 INTRODUCTION	8
02 TECHNOLOGY OFFER	9
03 METHODOLOGY	10
04 LAND COVER	20
05 SOLAR RESULTS	22
06 SETTLEMENT-LEVEL ANALYSIS	33
07 RECOMMENDATIONS	40
08 SUMMARY	41
09 REFERENCES	41
10 ANNEXURE I	42

01 INTRODUCTION

The objective of this report is to identify unused lands in Villupuram District, to evaluate its suitability for distributed solar energy deployment and to assess to what extent the district can contribute meeting Tamil Nadu's solar energy capacity addition target of 20 GW by 2030.

Land is a finite resource with competing and conflicting use. Unplanned and unscientific use of land can exacerbate climate change, and disasters like drought or floods. Judicious use of land resources is key in meeting the state's social, economic, and environmental development goals. A comprehensive land suitability assessment can guide responsible and sustainable development practices and land-use policies.

As per its intended Nationally Determined Contribution under the United Nations Framework Convention on Climate Change, India is targeting 50% of its cumulative power generation capacity from non-fossil fuel-based energy resources by 2030.

Tamil Nadu has announced that it aims at adding an additional 20 GW of solar energy capacity by the year 2030. This capacity addition is envisioned to be primarily achieved by distributed solar energy generation.

One of the key challenge in developing solar energy project is the identification of suitable lands and land acquisition. The complex land acquisition process can lead to project delays or even cancelation of proposed projects.

Unused or fallow lands can be of particular interest for solar energy development. Developing unused lands for solar energy avoids the uptake of land under productive agricultural use. Local authorities can proactively facilitated solar energy development in the district by identifying unused lands and by undertaking a solar suitability assessing of these lands. This geospatial information if provided to solar developers and electricity distribution companies has the potential to spur local economic development and to create green jobs.

The objective of this report is to identify unused lands in Villupuram district and to evaluate to what extent these unused lands can be utilized to meet the state's solar energy capacity addition target of 20 GW by the year 2030. Deploying 20 GW of ground mounted solar energy will require approximately 80,000 acres of land, this represents 0.25% of Tamil Nadu's total geographical area (TGA).

02 TECHNOLOGY OFFERING

ANALYSING INTERLINKAGES FOR INFORMED DECISION MAKING

Lila combines geo-spatial and socio-economic data-layers to address the core aspects of sustainable land-use management. It identifies and evaluates unused lands for its potential in terms of solar energy, forestation and water management.

The tool is designed to provide flexible solutions with in-built climate intelligence that enables to understand the physical constraints and social demand of a local region and facilitate rapid decision-making & implementation.

It allows a 360° view of a highly interlinked problem by analyzing multiple layers of information at once and by creating rapid data-based insights derived from earth observation data, machine learning algorithms, integrated public datasets and in-depth subject expertise. An automated data pipeline performs a comprehensive evaluation of the natural potential of a land w.r.t its ecosystem as well the socio-economic context, to ensure that its protection and development get the "right" context.

We have an in-house land-cover algorithm that analyses satellite imagery across a year and assigns every pixel a land-cover class based on its recorded electromagnetic spectral signature. This way we can reliably identify lands that have been lying barren over a certain period of time or those that remain unused. We perform advanced terrain analysis based on digital elevation maps to understand the physical constraints. And we assess the true potential of a land with respect to its ecosystem as well the socio-economic context. This information is further fed to our suitability analytics for site rating and selection.

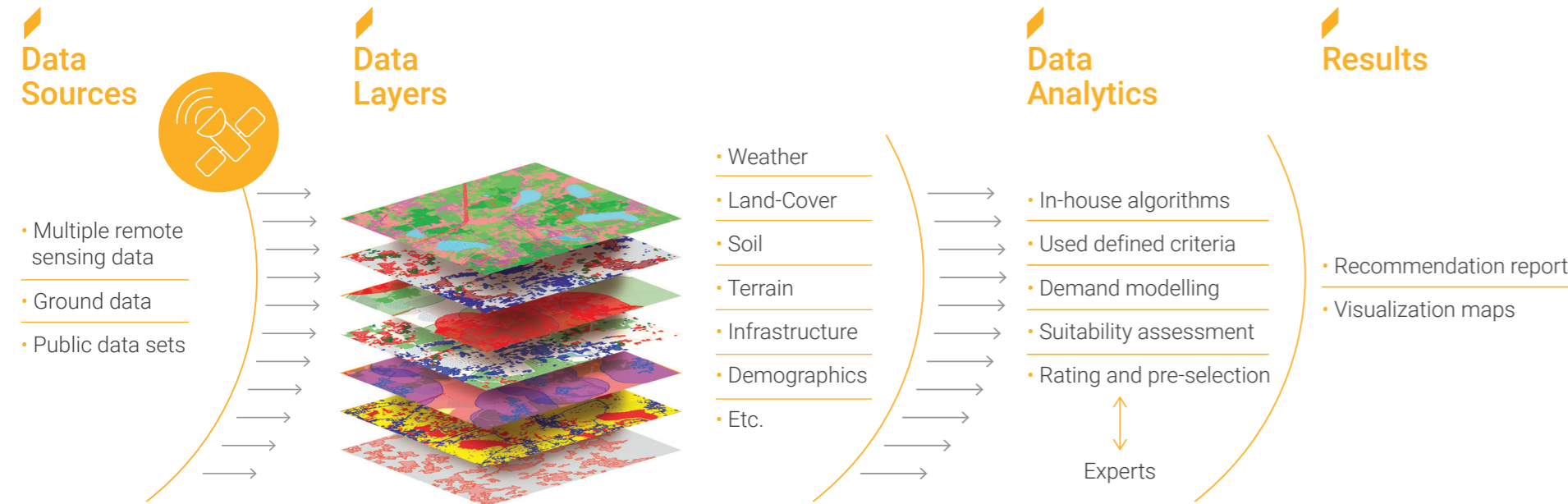
This can replace the current outdated ways of infrastructure expansion that involve long lead times and lack of reliable data for planning and impact measurement. By creating more transparency and delivering sustainable development goals (SDGs) faster in a more diligent and precise manner.

03 METHODOLOGY

ANALYSING INTERLINKAGES FOR INFORMED DECISION MAKING

Lila combines geo-spatial and socio-economic data-layers to address the core aspects of sustainable land-use management. It identifies and evaluates unused lands for its potential in terms of solar energy, reforestation and water management.

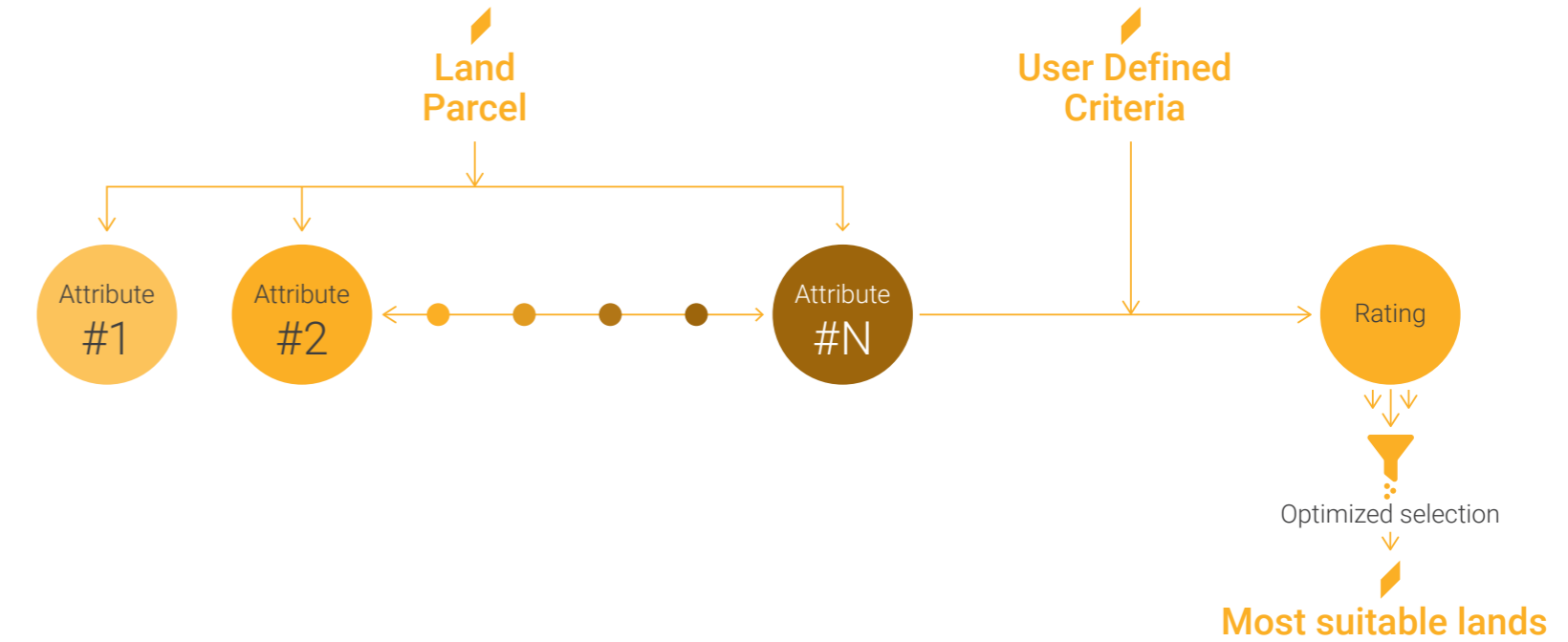
Analysing multiple dimensions and interlinkages & making the right decisions



Unifying diverse data & expertise on a single platform

Insights from the integrated technology layers along with user-defined criteria are utilised to optimise the land evaluation and recommendation process.

User-based Prioritisation Ratings



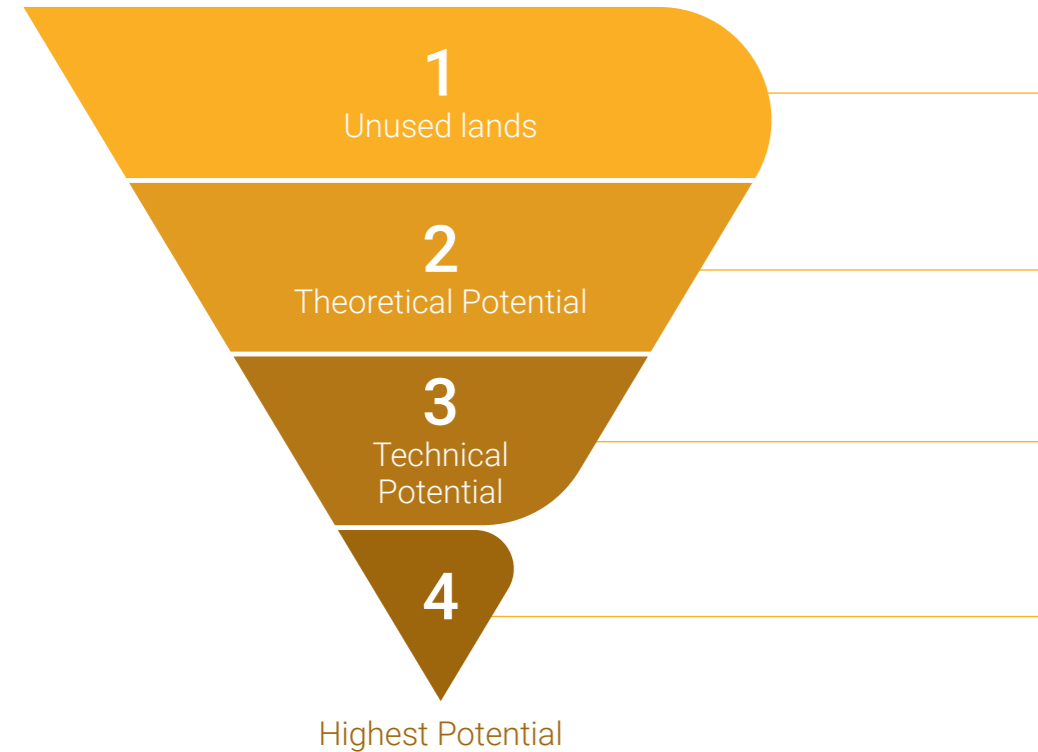
The criteria definition is overall a flexible process and serves as an adaptability measure, specifically designed to provide agility in terms of meeting the requirements of different projects and stakeholders for any geo-location. Further details w.r.t land evaluation and criteria for solar suitability are outlined in the next page.

Additional value that our tool provides:

- Accurate land-use maps that extract unused lands with better precision.
- Additional data layers on key infrastructure services and socio-economic metrics for each selected site for supporting better planning and development.
- A comprehensive analysis that detects potential competing land utilizations for solar energy, reforestation and water harvesting. Which can result in recommendations for co-location of solar, water and forest initiatives thereby resulting in high impact climate action..

EVALUATION STEPS

The land suitability assessment is undertaken in a 4-step filtration process to identify unused lands that consecutively meet theoretical, technical and highest potential criteria (refer to tables below).



- Unused lands: All lands that have not been cultivated for a period of one year.
- Theoretical Potential: All lands suitable for distributed solar PV generation.
- Technical Potential: All suitable lands meeting a minimum set of commercial criteria.
- Highest Potential: Lands with the highest commercial potential for solar energy development.

THEORETICAL POTENTIAL

Criteria	
Slope	< 8%
Distance to water body	> 100 m
Distance to railway	>200 m
Distance from highways	>500 m
Distance to airport	>500 m

TECHNICAL POTENTIAL

Criteria	
Min. land size	5 acres
Distance to evacuation infra	<10 km
Distance to road access	<2 km
Lands within protected forest areas*	excluded

Note: Unused lands sited within potential tree-cover corridors, and within the administrative boundaries of villages situated within reserve forest were filtered out.

HIGHEST POTENTIAL

Criteria	High	Medium	Low
Plot size (acres)	>100	>20	>5
Distance to substation (km)	<2	<5	>10
Distance from road (km)	<1	<2	<2

To contribute meeting Tamil Nadu's target of 20 GW, Villupuram district would need to target

0.62 GW of solar energy capacity addition. A cumulative area of 2,465 acres of land is required for this.

TARGET SETTING

Tamil Nadu is planning to add 20 GW of solar energy capacity to its generation fleet by 2030. This is expected to be done through distributed solar systems in all districts of the State. If Villupuram district were to contribute its equal share to the 20 GW solar energy capacity addition target based on its share of population on the State's total population, then a 0.62 GW of solar energy capacity addition and a cumulative area of 2,465 acres of land is required.

SOLAR TARGET

	State	District
Population	7,21,47,039	10,37,860
Solar Target (GW)	20	0.62
Land requirement (acres)	80,000.00	2,465

Additionally, all lands with technical potential have been analysed in regards to its distribution by size and for its competing land-use for water harvesting and reforestation.

LAND DISTRIBUTION


Categories	Filter
Small area	>5 to 20 acres
Medium area	>20 to 100 acres
Large area	>100 acres

COMPETING USE FOR CLIMATE ACTION


Criteria	
Forest top rating	High
Water top rating	High

KEY TERMS: The following table provides further details on the key terms utilized for this land suitability assessment.

Term	Description
Theoretical potential	Identified unused lands that met a set of criteria indicating a basic potential for solar development, are highlighted. The criteria are listed above.
Technical potential	A set of criteria that characterizes unused lands with a relatively good potential for solar development, in terms of social, economic and environmental factors. The criteria under are listed above.
Low potential	A sub-category of technical potential criteria. This is a minimum criteria.
Medium potential	A sub-category of technical potential criteria, satisfying a higher number of criteria than 'low'. It relates to the distance to the nearest substation, the size of the unused land, and the distance to the nearest road.
High potential	A sub-category of technical potential criteria, satisfying the highest number of criteria. It relates to the distance to the nearest substation, the size of the unused land, and the distance to the nearest road.
Competing use for climate action	The suitability of unused lands for other climate action purposes, such as water harvesting, and forestation is assessed.
Land use	The LiLa algorithm identifies 6 categories of land use: unused/barren, sparse vegetation, cropland, tree cover, water and built-up. Land is recognized under each of these categories by the algorithm based on the pixel properties obtained through satellite imagery.
Roads	Different types of pathways are recognized as roads, including highways, primary, secondary, tertiary and residential roads. The roads included in this analysis consider those sufficient to allow mini-trucks to pass.
Water body	Please refer to the 'Landcover definitions' table on page 13.
Elevation	The elevation of any land is measured relative to the highest point of the watershed it is in. Ex: lands with elevation > 0.7 are lands that lie above 70% of the region's watershed elevation.
Protected areas	These are areas allocated for reserve forests and other such classified lands.
Water potential	Lands with water potential are those that intercept, catch or receive run-off water flows that are a result of considerable precipitation.
Evacuation infrastructure	This criteria indicates whether the identified unused land is positioned within a specified distance to the nearest transmission line or substation (in a straight line).
Global Horizontal Irradiance (GHI)	This is the total (direct and diffuse) solar energy intercepted by a unit of horizontal surface. The figure used in the report is a yearly average, measured in kWh/m ² /day.
Water harvesting potential	Lands with water harvesting potential are areas that intercept run-off water and in addition also have a considerable percentage of vegetation cover (30% and above).
Forestation Potential	Lands with forestation potential are lands that are well-positioned for growing forests. This considers run-off water the land intercepts, the relative elevation and the potential to build a forest corridor.



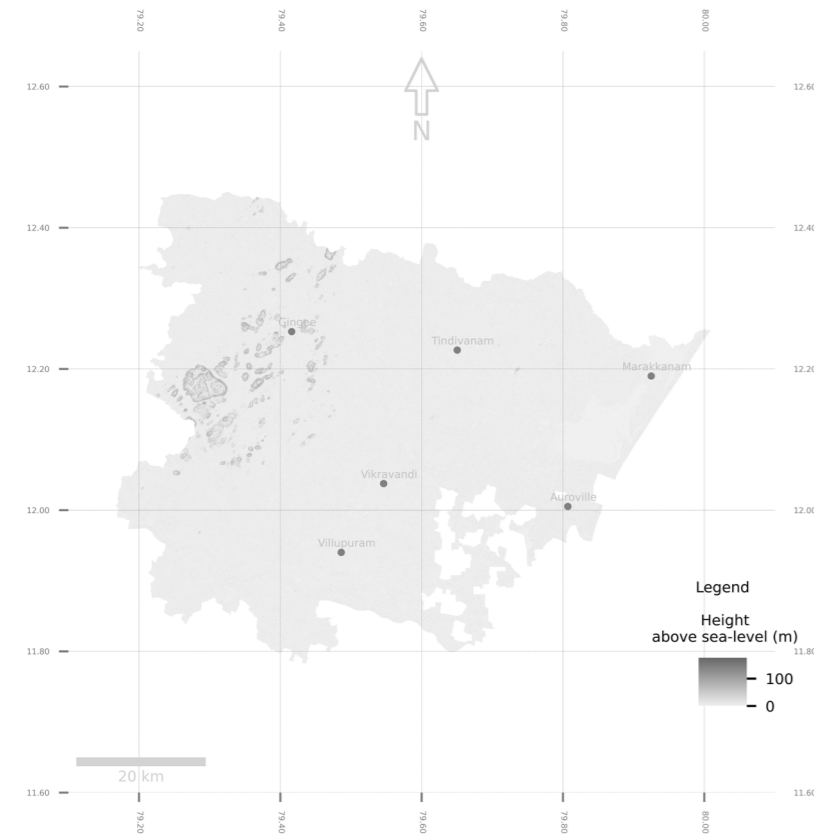
‘Expanding human requirements and economic activities are placing ever increasing pressures on land resources, creating competition and conflicts and resulting in suboptimal use of resources. By examining all uses of land in an integrated manner, it makes it possible to minimize conflicts, to make the most efficient trade-offs and to link social and economic development with environmental protection and enhancement, thus helping to achieve the objectives of sustainable development.’ - United Nations (SDG Goal 15)



Source: United Nations (n.d) 'Description: Desertification, land degradation and drought.' Available at: <https://sdgs.un.org/topics/desertification-land-degradation-and-drought> (accessed on 28th March 2023).

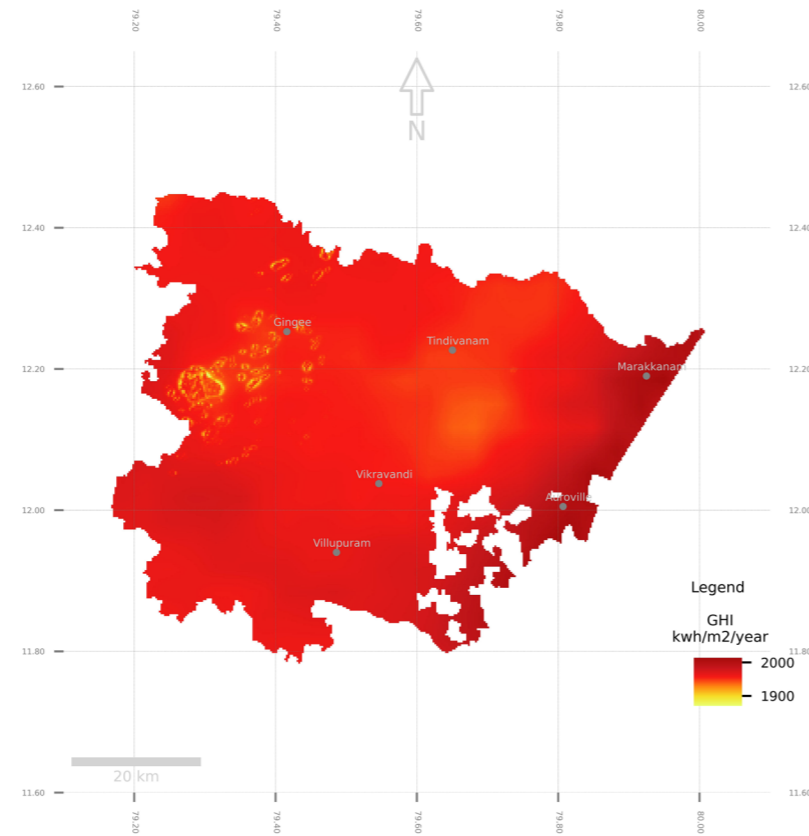
HEIGHT-ABOVE SEA LEVEL

Lands with a slope larger than 8% may increase the capital cost of the project and thereby are excluded from the lands with technical potential. The height of the land above sea-level is indicative of the slope and topography of the area.



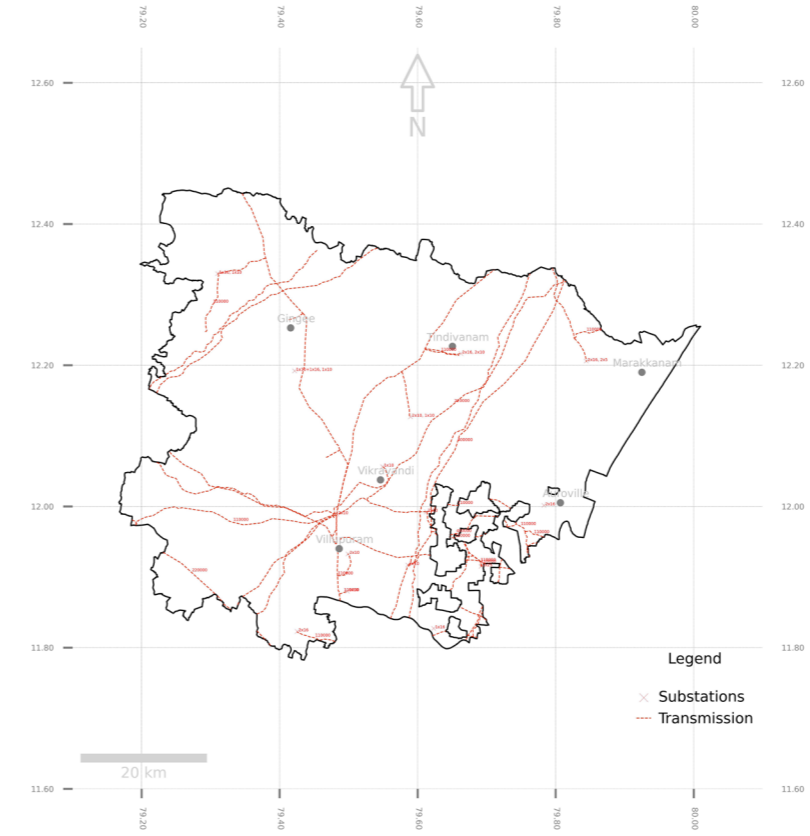
GLOBAL HORIZONTAL IRRADIATION

The GHI of a site is a key determining factor for the energy generation potential of a solar plant.



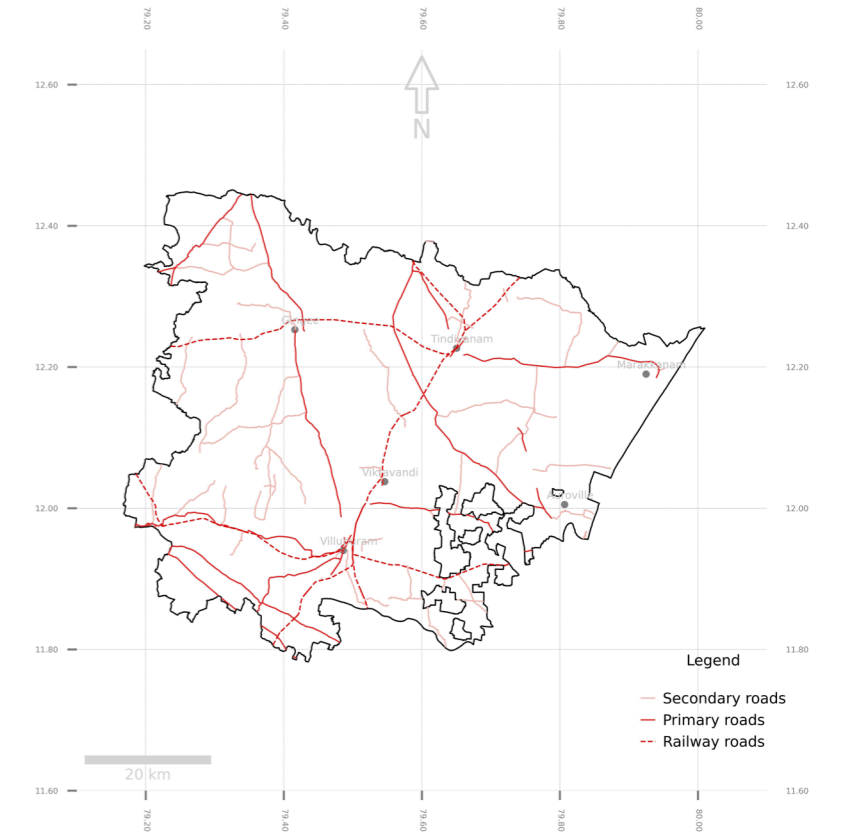
POWER EVACUATION

Availability and accessibility of adequate power evacuation infrastructure is one of the key criteria for deciding on the location of a solar plant.



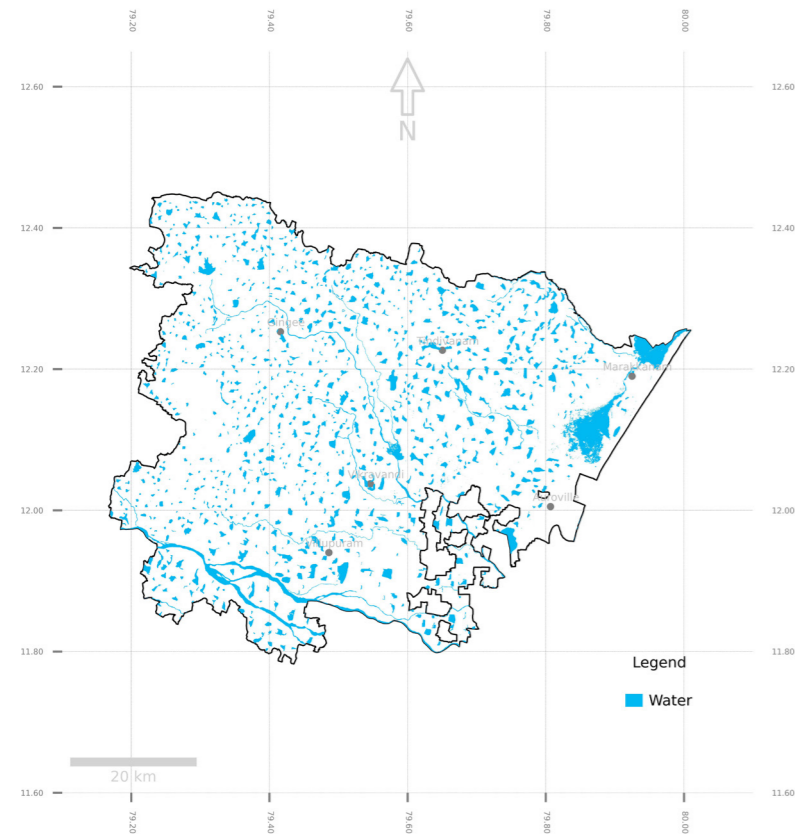
MAJOR ROADS

Vicinity to a road that can accommodate load carriers is essential for the deployment of a solar system.



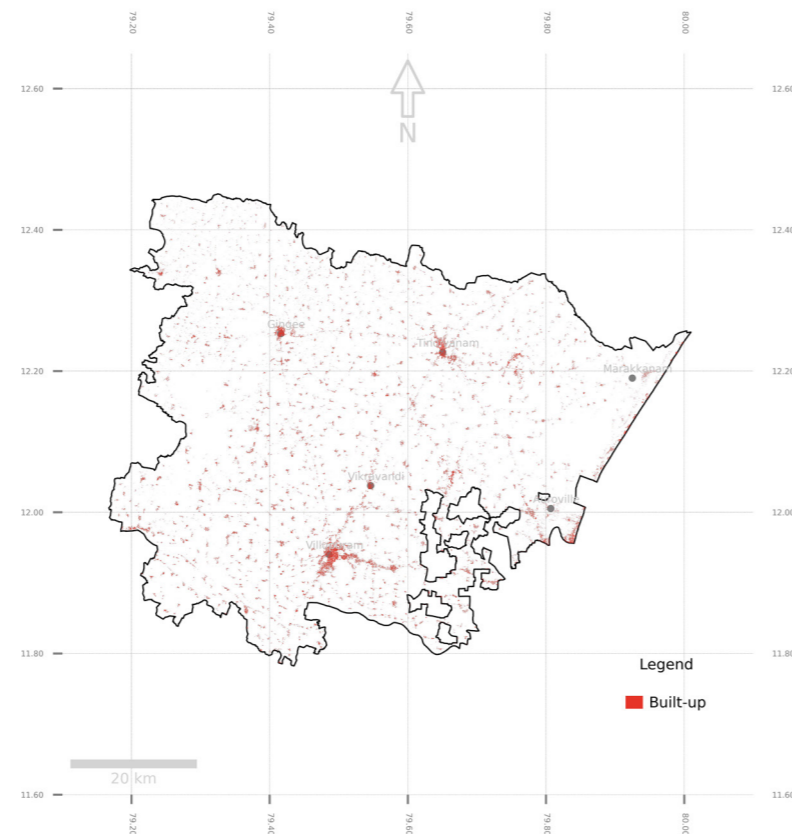
WATER BODIES

Large water bodies, if available, could be utilized for floating solar plants.



BUILT UP

Built-up area can indicate high load centres and rooftop solar potential.



To view the interactive map with these features: [Click here](#)

LANDCOVER DEFINITIONS:

Unused Lands

Lands that have been unused throughout the year (in terms of cultivation/built-up/water/trees) and does not belong to any of the other categories, and could be in barren condition sometimes.

Sparse Vegetation

Includes scrubs, grassland and sparse vegetation. Land covered with annual cropland that is sowed/planted and harvestable at least once within the 12 months after the sowing/ planting date.

Cropland

The annual cropland produces a herbaceous cover and is sometimes combined with some tree or woody vegetation. Note that perennial woody crops will be classified as the appropriate tree cover or shrub land cover type. Greenhouses are considered as built-up.

Tree-cover

This class includes any geographic area dominated by trees with a cover of 10% or more. Other land cover classes (shrubs and/or herbs in the understory, built-up, permanent water bodies, ...) can be present below the canopy, even with a density higher than trees. Areas planted with trees for afforestation purposes and plantations (e.g. oil palm, olive trees) are included in this class. This class also includes tree covered areas seasonally or permanently flooded with fresh water.

Water Bodies (Permanent)

This class includes any geographic area covered for most of the year (more than 9 months) by water bodies: lakes, reservoirs, and rivers. They can either be fresh or salt-water bodies.

Built-up

Land covered by buildings. Buildings include both residential and industrial building.

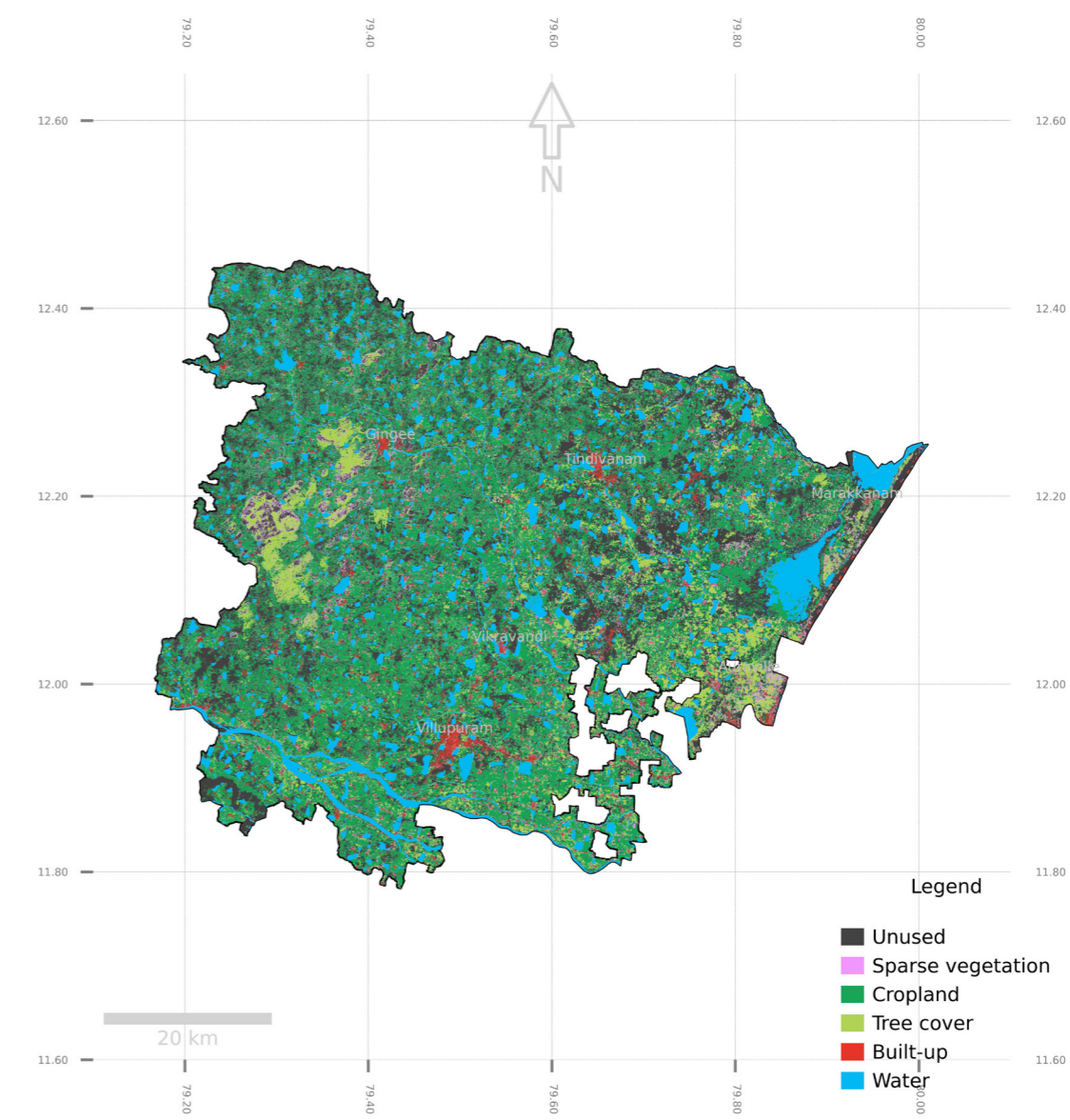
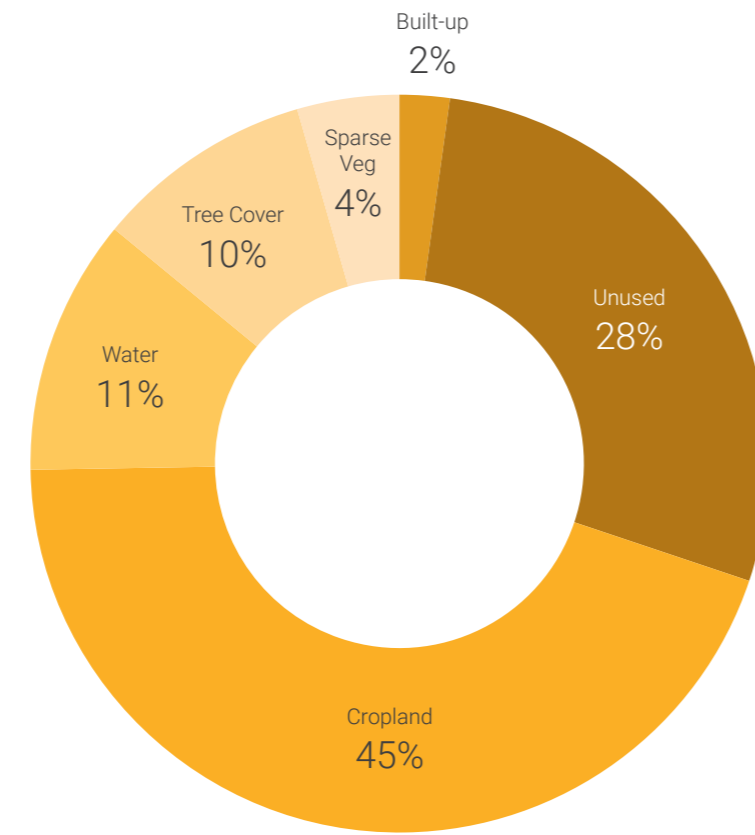
04 LAND COVER

The districts land cover has been identified as per details below:

Land Cover	Km ²
Built-up	23.83
Unused	1,092.23
Cropland	1,742.04
Water	438.54
Tree Cover	374.04
Sparse Vegetation	174.58
Total	3,907

The districts land cover is dominated by agriculture, 45% of TGA is under crop land. It has 10% of its land under tree cover, considering the state average of 23.80% (MOEF 2017) this is a relatively low tree cover share. Unused or fallow lands account for the second highest recorded land-use in the district, with 28 % of TGA or 1,092,23 km². The high availability of unused lands could present rich opportunities for climate mitigation and adaptation actions including distributed solar energy deployment.

Unused or fallow lands account for the second highest recorded land-use in the district, with 28% of TGA or 1,092.23 km². These lands will be assessed for its suitability for distributed solar energy deployment.



To view the interactive map with these land cover layers: [Click here](#)

05 SOLAR RESULTS

Technical suitability

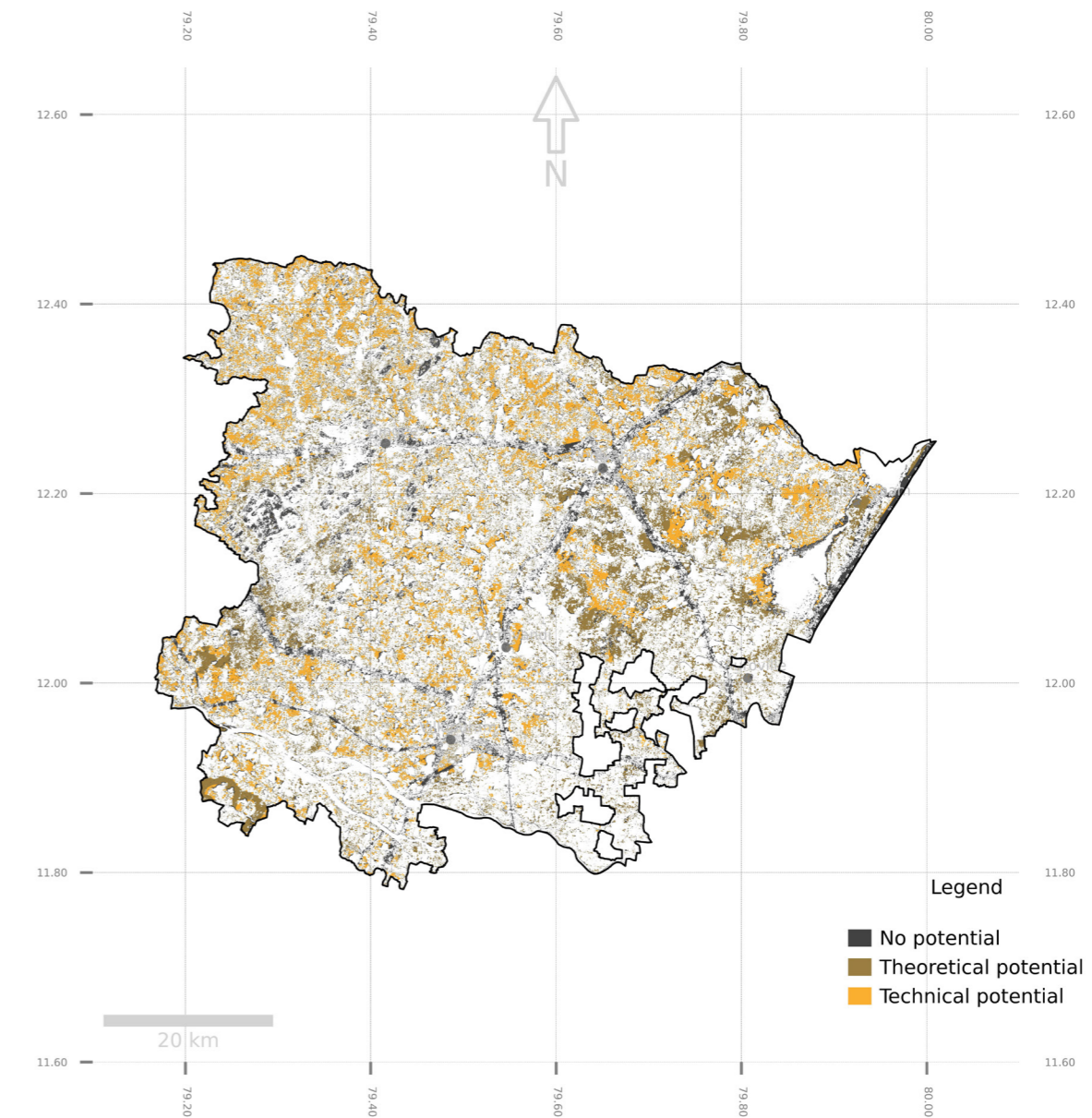
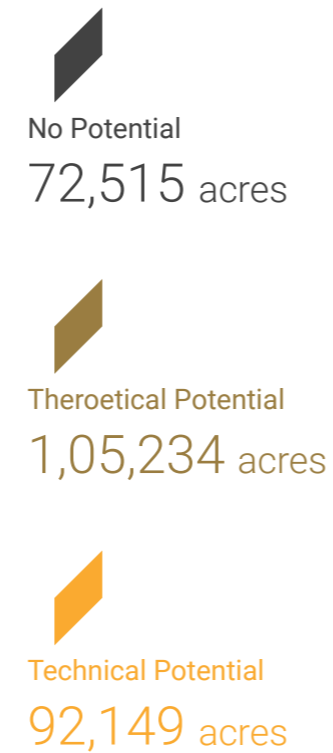
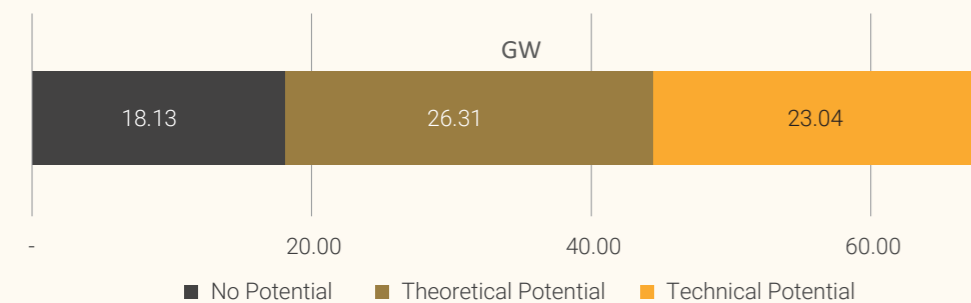
KEY RESULTS

Suitable land	92,149	acres
Share on total area	9.5	%
Share of unused area	34	%
Share of solar target	3,738	%

RESULTS

Category	Plots (nos)	Area (acres)	Capacity (GW)
No Potential	31,023	72,515	18.13
Theoretical Potential	1,37,460	1,05,234	26.31
Technical Potential	3,084	92,149	23.04

Cumulative Capacity



Distribution by plot size

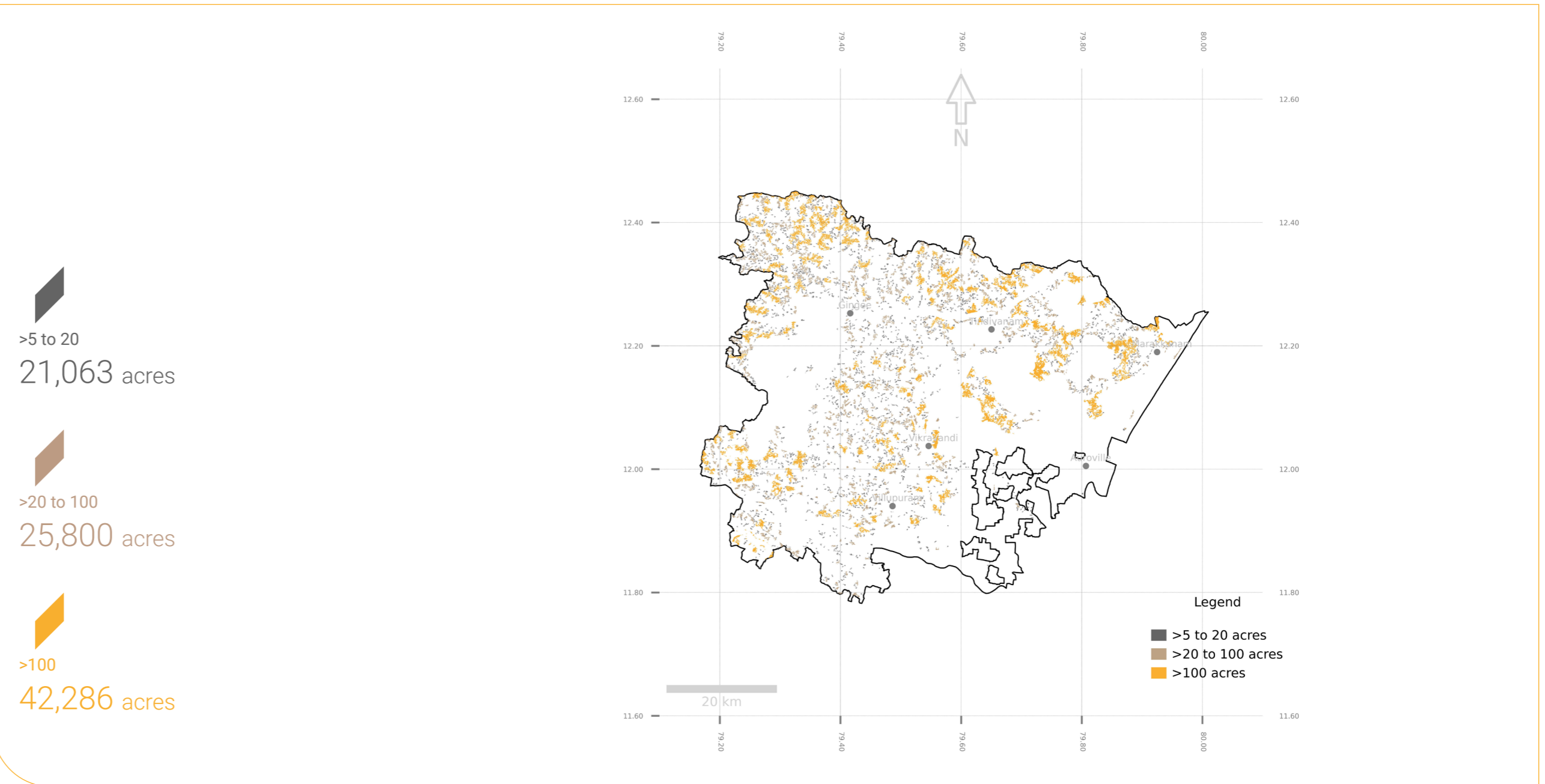
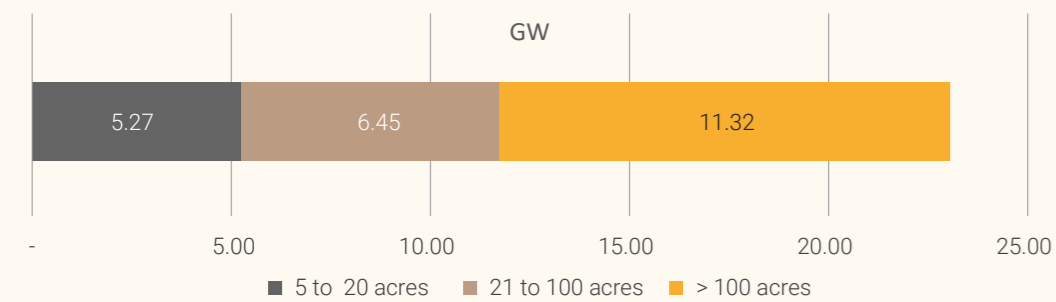
KEY RESULTS

Largest plot	1,941	acres
Plots > 100 acres	148	%
Sum of capacities > 20 acres	17.77	GW
Sum of capacities > 100 acres	11.32	GW

RESULTS

Plot sizes (acres)	Plots (nos)	Area (acres)	Capacity (GW)
>5 to 20	2,306	21,063	5.27
>20 to 100	630	25,800	6.45
>100	148	45,286	11.32

Cumulative Capacity



High Potential

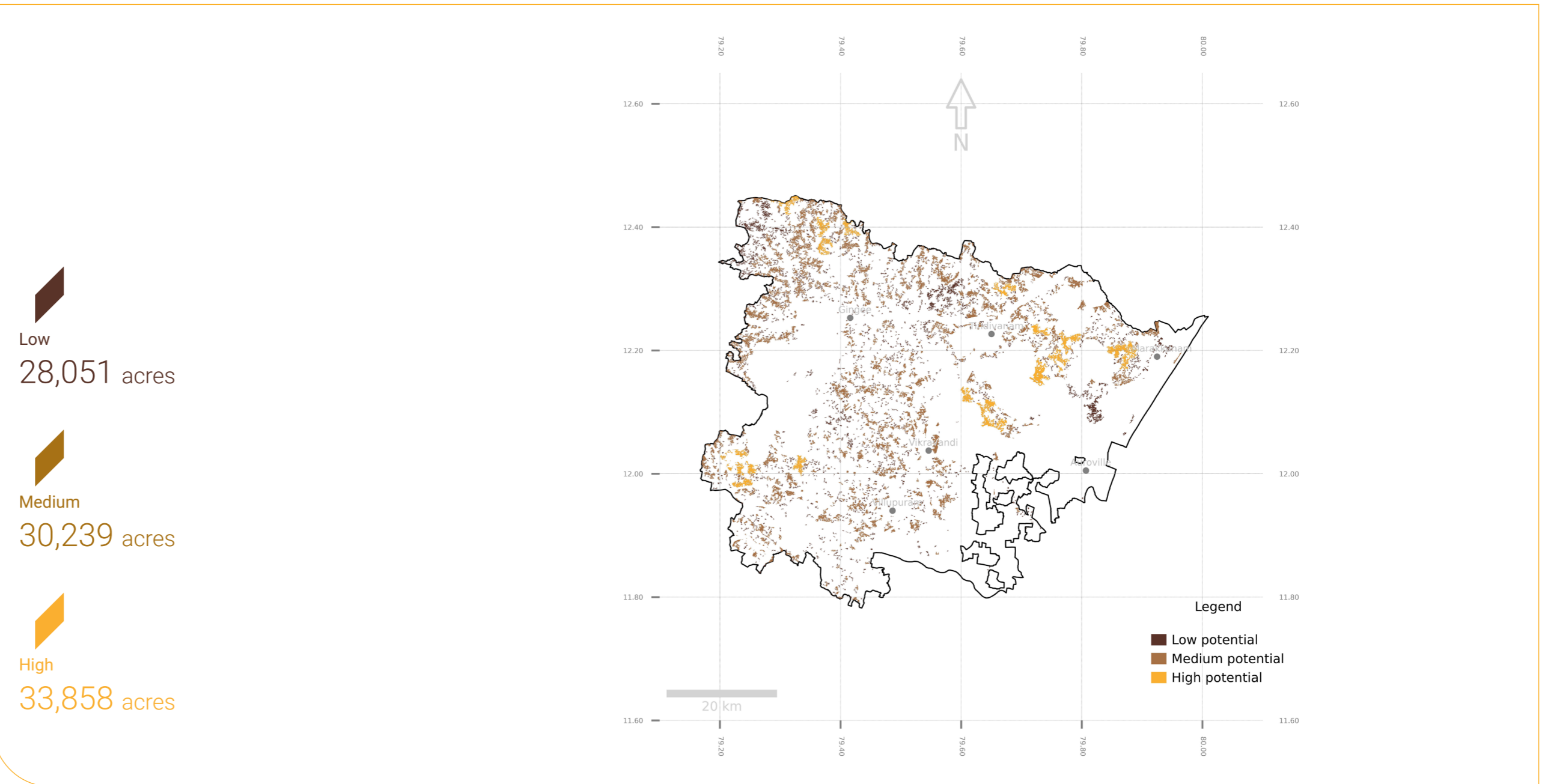
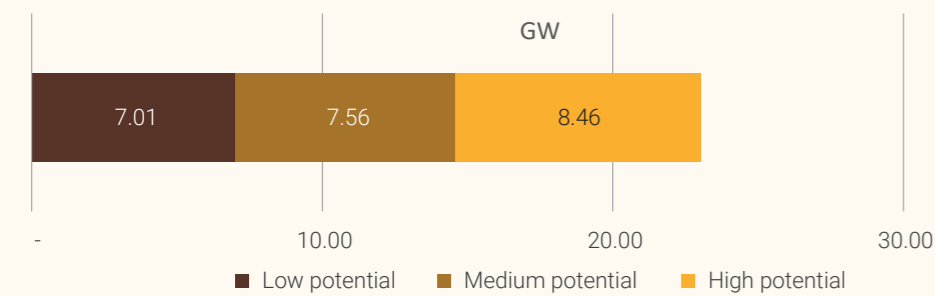
KEY RESULTS

Total area	33,858	acres
Plots	103	nos
Solar	8.46	GW
Share of target	1373	%

RESULTS

Potential	>2.5 to 20 (acres)	>20 to 100 (acres)	>100 (acres)
Low	21,063	3,619	3,370
Medium	-	22,181	8,058
High	-	-	33,858

Cumulative Capacity



Competing use for Climate Action

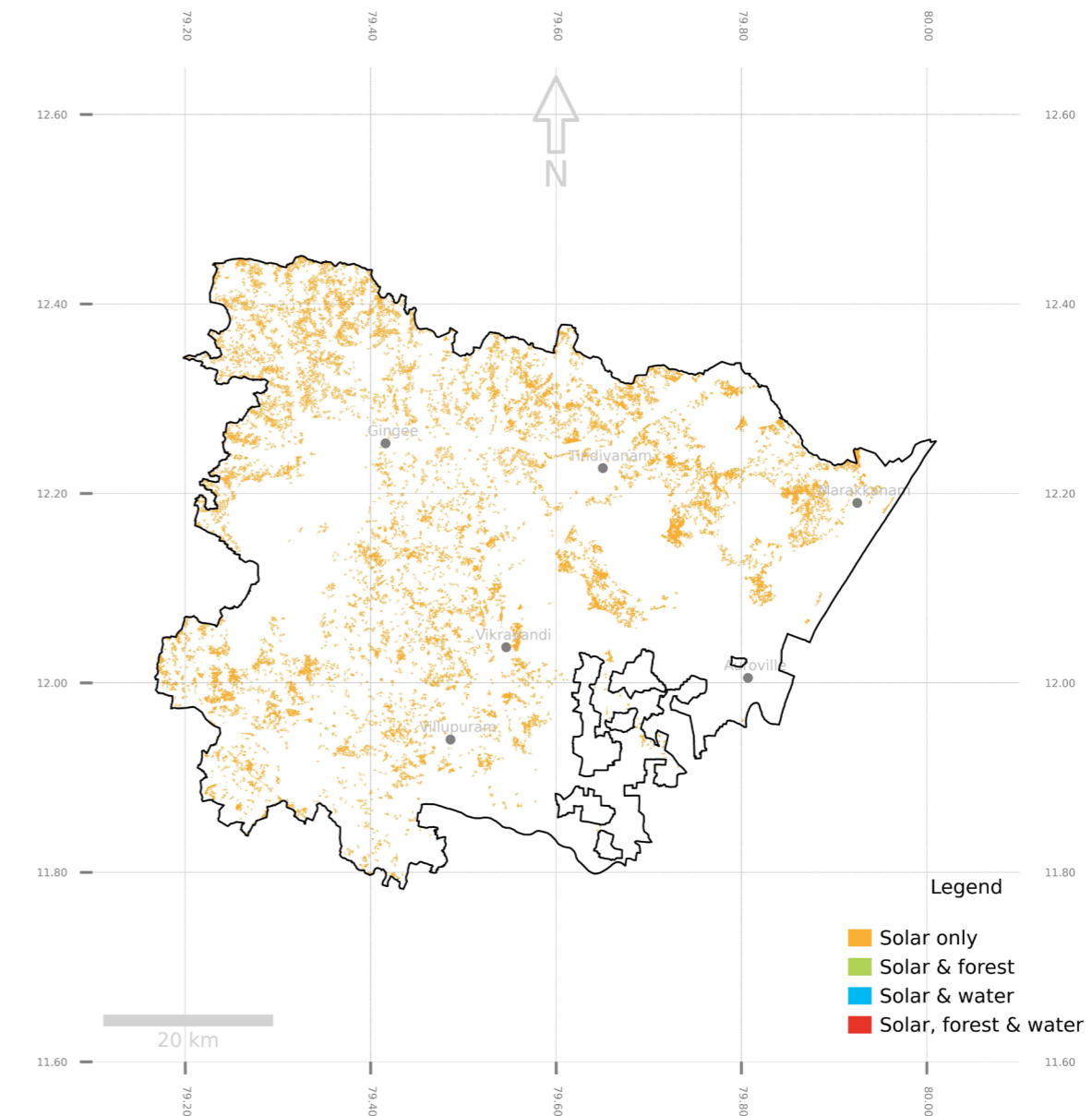
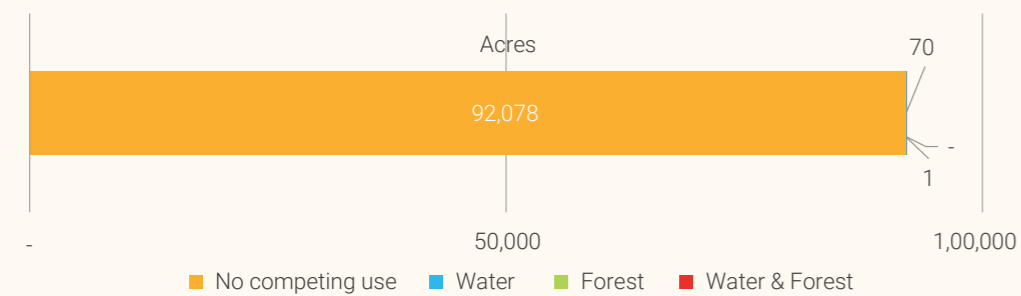
KEY RESULTS

Competing use	71	acres
Share of suitable area	0.08	%
Water use	1	acres
Forest use	70	acres

RESULTS

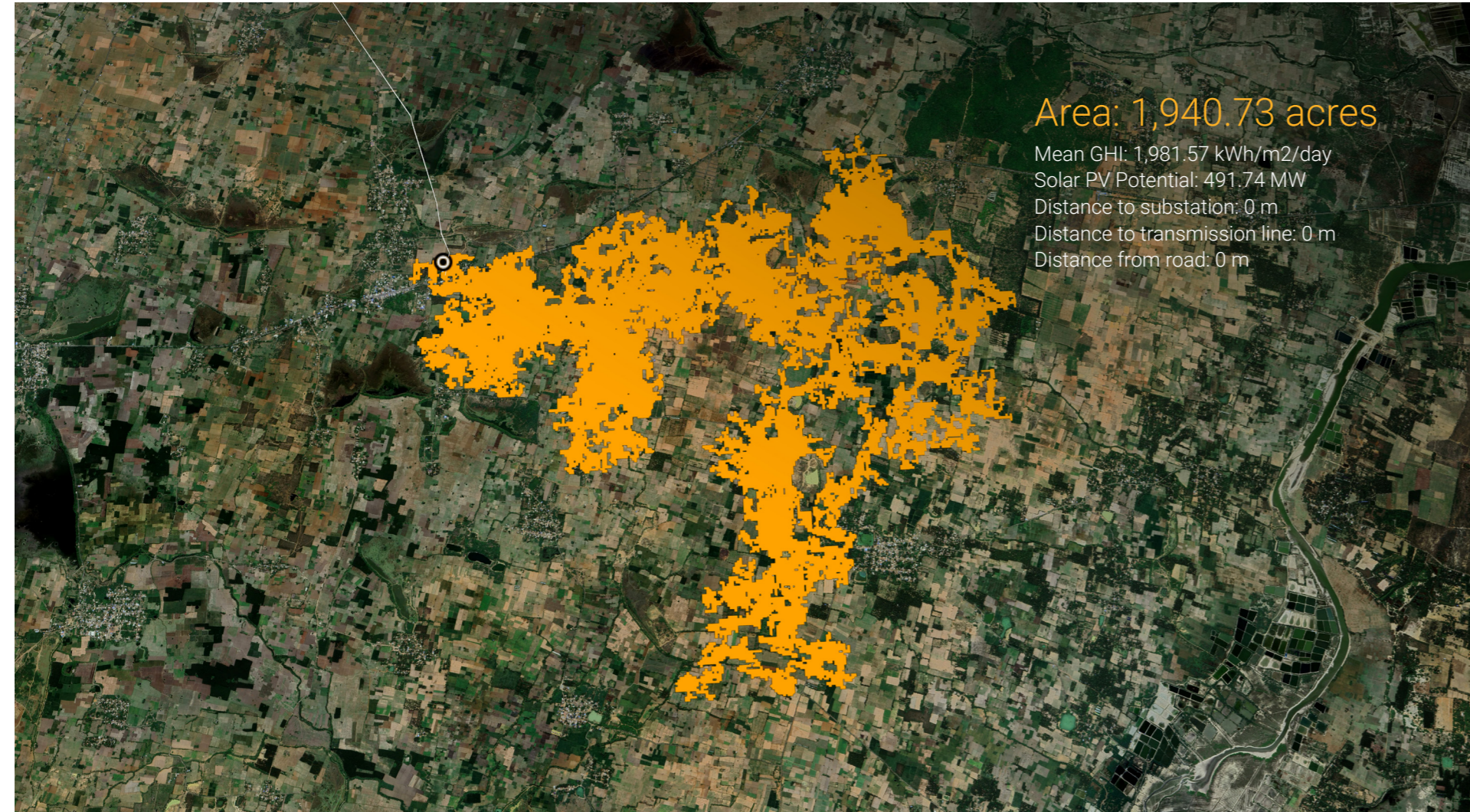
Plot sizes (acres)	Forest (acres)	Water (acres)	F&W (acres)
>5 to 20	22	0	0
>20 to 100	1	1	0
>100	47	0	0

Cumulative Capacity



High potential sites

This section highlights a contiguous unused land polygon with a high potential for solar energy deployment. Out of all the high rated lands, this example has the largest area.



Top 15 Lands Identified

ID	Location		Area (acres)	GHI (kWh/m ² /year)	Solar potential (MW)	Height above sea-level		Distance to evacuation		Substation capacity (MW)	Transmission voltage (kV)	Accessibility			Competing use	
	Long (°)	Lat. (°)				Min (m)	Max (m)	To substation (m)	To transmission (m)			Minimum distance to road(m)	Road type	Number of roads	(acres)	Type
1	79.87	12.20	1,941	1,982	485	0.00	11.08	-	-	2x16, 2x5	110	0	primary tertiary unclassified	2 2 1	0 7 0	Water Forest W + F
2	79.73	12.16	1,377	1,948	344	0.00	11.41	-	-	-	400	0	secondary tertiary	2 2	0 0 0	Water Forest W + F
3	79.63	12.11	1,347	1,945	337	0.00	13.79	1,191	-	2x10, 1x10	220, 220	0	primary tertiary	2 7	0 5 0	Water Forest W + F
4	79.23	12.02	1,336	1,971	334	0.00	12.28	-	-	-	110, 220	0	secondary residential track unclassified	4 9 2 3	0 9 0 0	Water Forest W + F
5	79.78	12.22	978	1,960	245	0.00	11.86	-	-	-	400	0	primary tertiary	2 1	0 16 0	Water Forest W + F
6	79.65	12.07	919	1,948	230	0.00	11.15	-	-	-	400, 220	0	primary secondary	1 2	0 0 0	Water Forest W + F
7	79.76	12.18	783	1,957	196	0.00	8.95	-	143	-	400	0	primary secondary	1 1	0 0 0	Water Forest W + F
8	79.67	12.30	719	1,953	180	0.00	12.09	-	-	-	110	0	secondary	1	0 0 0	Water Forest W + F


06 SETTLEMENT – LEVEL ANALYSIS

ID	Location		Area (acres)	GHI (kWh/ m2/ year)	Solar potential (MW)	Height above sea-level		Distance to evacuation		Substation capacity (MW)	Transmis- sion voltage (kV)	Accessibility			Competing use	
	Long (°)	Lat. (°)				Min (m)	Max (m)	To sub- station (m)	To trans- mission (m)			Minimum distance to road(m)	Road type	Number of roads	(acres)	Type
9	79.33	12.02	693	1,974	173	0.01	13.53	-	-	-	110, 220	91	residential	1	0 0 0	Water Forest W + F
10	79.37	12.37	690	1,960	172	0.00	12.74	-	-	-	110	0	primary tertiary	5 8	0 0 0	Water Forest W + F
11	79.31	12.44	670	1,959	168	0.00	12.05	1,669	438	2x10	110	0	tertiary	1	0 0 0	Water Forest W + F
12	79.37	12.40	664	1,960	166	0.00	12.71	-	-	-	110	0	primary tertiary	1 4	0 0 0	Water Forest W + F
13	79.73	12.24	602	1,952	150	0.00	11.89	-	-	-	220, 220	0	tertiary unclassified	2 1	0 0 0	Water Forest W + F
14	79.24	11.98	587	1,971	147	0.00	13.77	-	416	-	110	0	primary secondary tertiary	3 1 1	0 0 0	Water Forest W + F
15	79.42	12.40	582	1,961	146	0.01	12.11	-	3,323	-	110	0	tertiary	1	0 0 0	Water Forest W + F

The analysis conducted at settlement-level indicates the potential for distributed solar energy, with respect to the availability of unused land within the administrative settlement boundaries. The analysis conducted at settlement-level is presented in a table in Annexure I. The settlement boundaries accounted for areas dedicated for reserve forests separately. Thus, the total number of boundaries are higher than the official number of administrative boundaries (928) in Villupuram district.

Using remote sensing settlements specific insights were derived, these include: the total geographic area (TGA), the existing land use, and the unused lands with technical potential for solar energy. The solar energy potential at settlement level is represented in terms of generation capacity (MW), impact on local land-use, and average solar capacity per resident (kW/person).

A detailed listing with a settlement-wise availability of unused lands suitable for solar energy development and other key data points relevant to solar energy development and land-use planning is provided in the annexure of this report.

 To view the interactive map with the top 15 lands: [Click here](#)

Solar potential by settlement

KEY RESULTS

Top 10 settlements	1,905	MW
Top 10 settlements	0.79	acres
Share on district potential	8.27	%
Plot numbers	320	nos

RESULTS

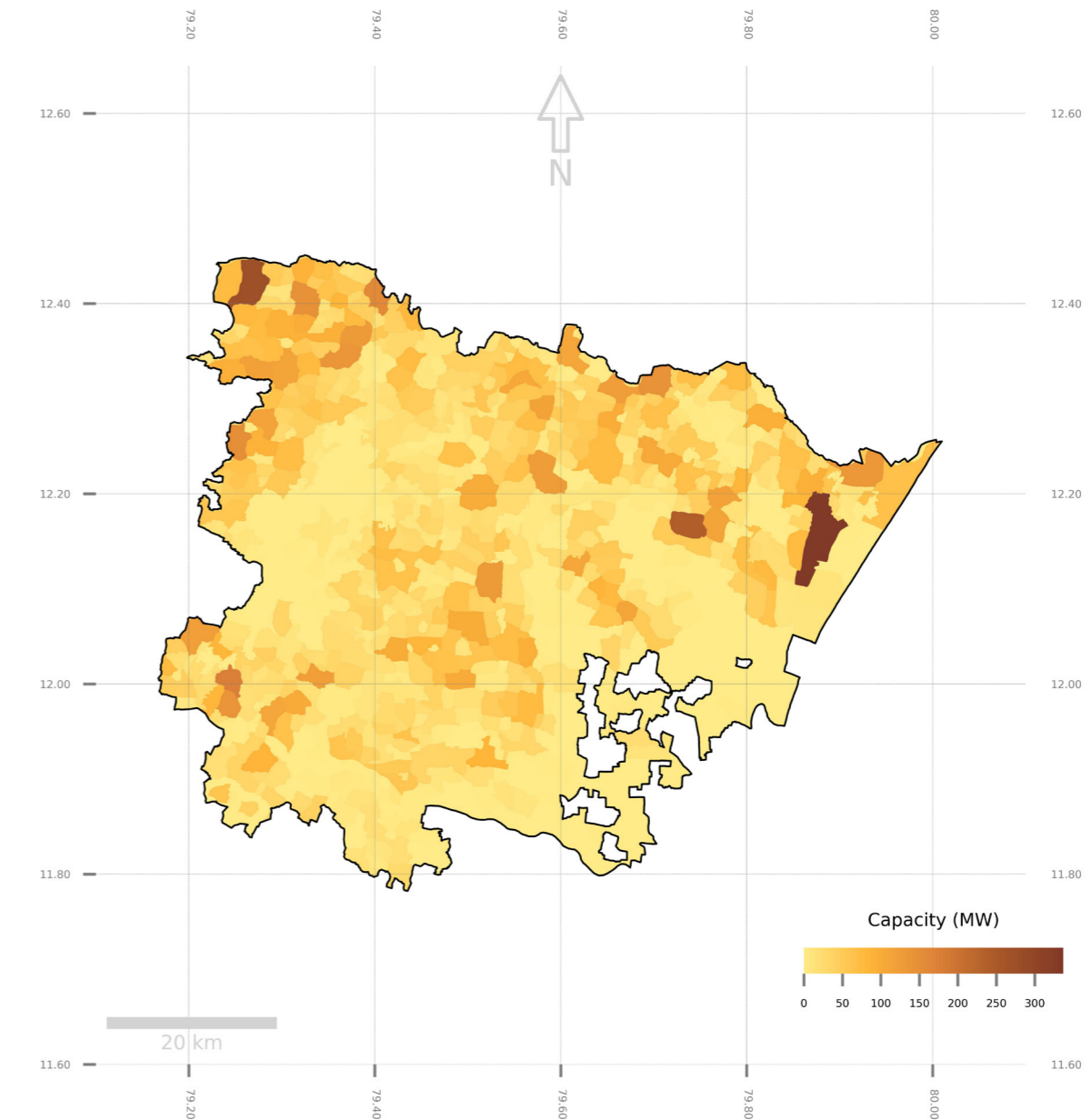
SETTLEMENT	Total geographic area (TGA) (acres)	Technical Potential (acres)	Technical Plots (nos)	Solar Capacity (MW)
Nadukuppam	7,416	1,348	35	337
Vailamur (Mel)	3,871	1,104	27	276
Peravur	2,702	959	11	240
Vadagarathayanur	1,756	702	7	175
Peruvalur	1,872	632	8	158
Pappambadi (Mel)	2,115	600	11	150
Eyyal	2,672	589	19	147
Olakkur Melpadi	2,572	578	20	145
Kollur	1,583	563	10	141
Valathi	2,500	544	11	136

Insights

Larger parcels of unused lands suitable for solar energy development are mostly concentrated in the north-east and north-west of the district.

Not all villages have unused lands that meet the technical criteria for solar energy deployment.

Technically suitable lands of the top 10 settlements account for 1% of the districts TGA. This is sufficient land for about 1.9 GW ground mounted solar energy capacity addition - more than the district's target of 0.62 GW.



Highest share of technical potential

KEY RESULTS

Highest share of technical potential	2,666	acres
Share on distric TGA	0.28	%
Top 10 settlements solar capacity	667	MW
Share on district solar capacity target	69	%

RESULTS

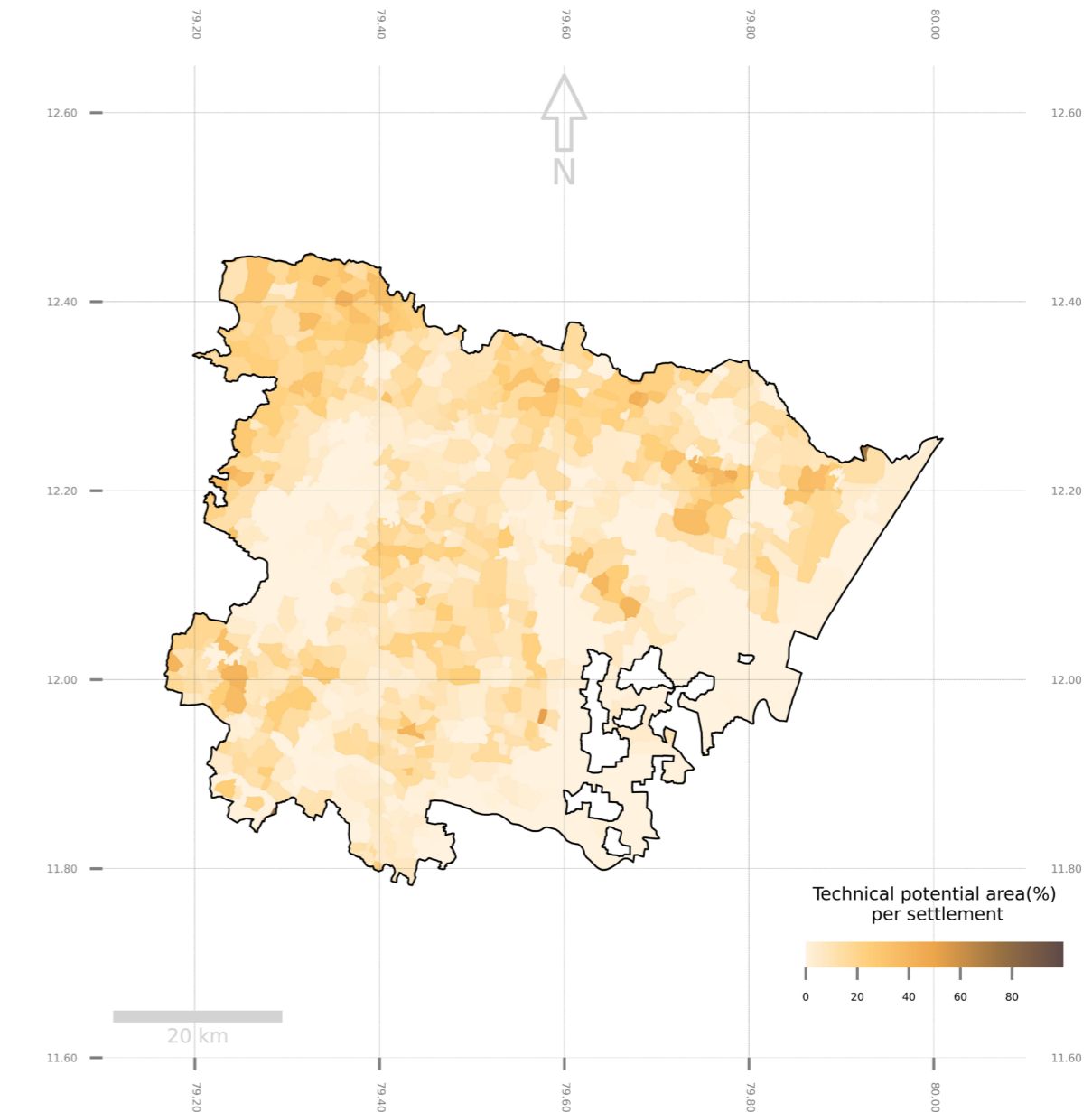
SETTLEMENT	Total geographic area (TGA) (acres)	Technical Potential (acres)	Technical Plots (nos)	Solar Capacity (MW)	Maximum Land use type
Vaduganathankuppam	352	182	52	45	Unused
Madavantangal	346	156	45	39	Unused
Evalur	479	207	43	52	Unused
Tengapakkam	163	70	43	18	Unused
Kuduvampoondi	806	333	41	83	Unused
Velakulam	746	301	40	75	Unused
Perumbakkam	643	258	40	65	Cropland
Chinnanolambai	484	194	40	48	Cropland
Vadagaraiathanur	1756	702	40	175	Unused
Kilarungunam	663	263	40	66	Unused

Insights

10 settlements with the highest share of suitable lands in relation to their TGA were identified. These 10 settlements hold a total potential of 667 MW. This is sufficient to meet the district target of 620 MW.

These top 10 settlements with high shares of solar potential are scattered across the district.

Most of the villages with a relatively high shares of lands suitable for solar have unused lands as the dominant land use category. A balanced approach to land use planning and land utilization is recommended; one in which solar energy development does not dominate a settlement's land-use.



Solar capacity per resident

KEY RESULTS

District average	10	kW/person
Top 10 settlements average	181	kW/person
Top 10 settlements TGA	5,215	acres
Top 10 settlements solar capacity	308	MW

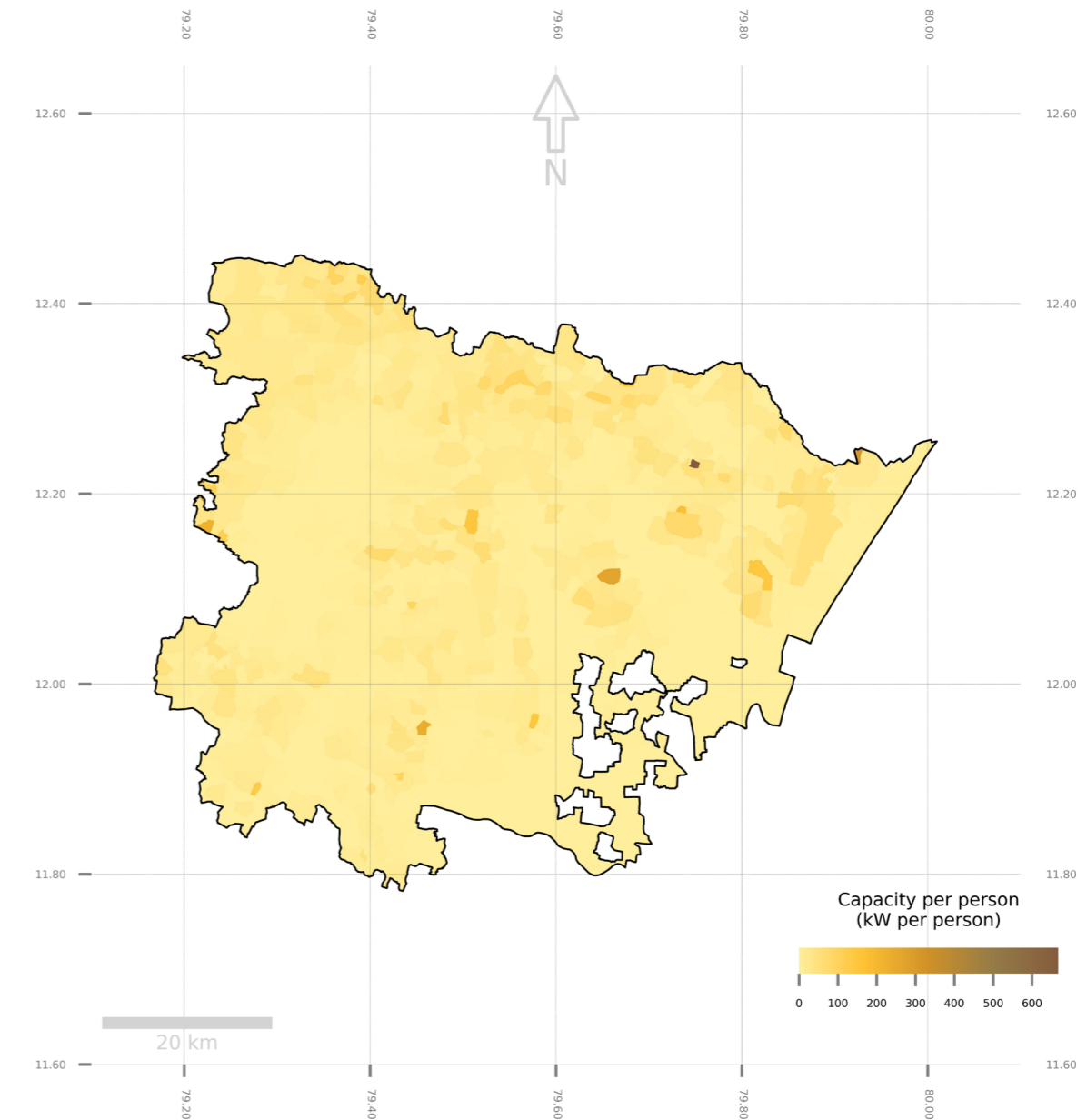
SETTLEMENT	Population	TGA (acres)	Solar capacity (MW)	Solar capacity per resident (kW/person)
Kulapakkam (Vada)	25	218	17	668
Parikkalpattu	227	973	61	267
Alathur	97	453	23	238
Anathamangalam	50	118	12	234
Kanjur	70	461	16	223
Tenneri	63	187	11	179
Vaduganathankuppam	305	352	45	149
Marur	192	922	28	147
Aruvadai	546	1368	78	143
Tengapakkam	125	163	18	140

Insights

Considering the total unused lands with technical solar potential and the total district population, the average district level solar capacity potential per resident is 10 kW/person.

The average solar capacity potential per resident for the highest 10 settlements is 181 kW/person.

With 668 kW/person Kulapakkam is the settlement with the highest per resident solar energy capacity potential.



07 RECOMMENDATIONS

PROMOTE ROOFTOP SOLAR

Rooftop solar has no requirement for land as such, as the installation at it will be deployed on existing structures. Rooftop solar can make a major contribution to the district's and the State's energy supply security. The district authorities can actively promote rooftop solar system and take the leadership by installing rooftop solar on all public buildings including government schools. The district government can also play a facilitating role by aggregation demand for rooftop solar from MSMEs and households in the district and by facilitating the price discovery.

INVITE SOLAR DEVELOPER

Villupuram has the potential to make a significant contribution to the states sustainable energy future. The district authorities may actively invite solar developers to set up solar energy plants in the district. A listing of unused lands, that are suitable and available for solar energy development can be published. Another option is to develop smaller solar parks that provide land and evacuation infrastructure and thereby offering a 'plug and play model' for solar energy developers. The solar energy produced from these plants could be supplied via the 'Open Access route' to local industries, businesses and municipal services.

GRID INTERCONNECTION

Interconnecting distributed solar energy systems to existing distribution feeders reduces the investment cost for the power evacuation infrastructure and optimizes the utilization of existing infrastructure assets. Distributed solar energy also reduces the technical losses; it avoids transmission losses and reduces distribution losses. Feeding power from the tail-end of the grid will further result in an improvement of voltage, as most distribution feeders in Tamil Nadu show an undervoltage. Distributed generation also means a distribution of risks and consequently an increase in grid resilience.

The current regulations do not permit solar energy systems to interconnect at existing HT feeders. Instead the solar developer will have to invest into a dedicated feeder that runs to the nearest substation. This requires additional capital investment and increase the cost of solar energy. A Change in grid interconnection rules maybe requested.

AVOID SOLAR DEVELOPMENT ON UNUSED LANDS SUITABLE FOR FORESTATION

The analysis showed that 70 acres of unused land with technical potential in Villupuram district has a competing land use with forestation. Considering that the district's area under tree cover is only 10% such lands could rather be prioritised for forestation initiatives.

DEVELOP LAND-USE AND ZONING REGULATIONS

The local land use impact of solar energy is the degree to which a solar project modifies or dominates the existing land-use at settlement or local level. Larger solar capacities require more land and therefore have a higher impact of local land use. While solar energy development needs to be actively promoted in order to ensure emission free and affordable access to energy land-use guidelines that avoid that solar energy projects dominate the land-use of a single settlement may need to be developed.

CO-LOCATE SOLAR & AGRICULTURE

Promoting the co-location of agriculture and solar energy generation - AgroPV -can make a significant contribution to meeting the districts solar energy targets without compromising on its agricultural productivity. A solar energy crop can also provide an additional income stream to local farmers. The State and District authorities may developed adequate policy frameworks and land-use regulations that promote AgroPV systems.

08 SUMMARY

Villupuram has a large share (28% of TGA) of lands that were identified as unused. 92,149 acres equalling 34% of total identified unused lands were found to have a technical suitability for developing ground mounted solar energy. About 23.04 GW of solar energy could be deployed on these unused lands. The state's solar energy capacity addition target by 2030 is 20 GW. This makes Villupuram a potential solar power house for the state.

103 plots with a cumulative area of 33,858 acres and a solar energy deployment capacity of 8.46 GW have been rated as having a high potential. These lands are all greater than 100 acres and show good road access and close vicinity to existing electricity grid nodes.

The settlement-level analysis provides more detailed listing of the solar energy potential. The top 10 villages in terms of technical potential can alone accommodate 1.9 GW of solar capacity. The values in this analysis indicate a great potential for the district and state, however, further practical constraints such as the ownership of the lands, the shape of the parcels of unused lands, the surrounding environment and other social factors will limit what can be carried out at ground level.

09 REFERENCES

1. Auroville Consulting. 2023. The Solar Energy - Land Nexus. Sustainable Land Use Strategy for Solar Energy in Tamil Nadu. Available at: <https://www.aurovilleconsulting.com/the-solar-energy-land-nexus/> (accessed on 13th March 2023)
2. Meta (2022) High Resolution Population Density Maps. Available at: <https://dataforgood.facebook.com/dfg/tools/high-resolution-population-densitymaps#accessdata> (accessed 18th February 2023).
3. University of Texas. Geo Data. University of Texas Library. Available at: <https://geodata.lib.utexas.edu/> (accessed on 10th March 2023)
4. United Nations (n.d) 'Description: Desertification, land degradation and drought.' Available at: <https://sdgs.un.org/topics/desertification-land-degradation-and-drought> (accessed on 28th March 2023).

10 ANNEXURE I

Note:

1. A plot that crosses a settlement boundary is counted as two plots. Thus, the total number of plots under settlement-wise analysis is higher than the district total.
2. The data used for the analysis had inherent disparities, causing slight differences in the overall settlement and district boundary.
3. The settlement boundaries accounted for areas dedicated for reserve forests separately. Thus, the total number of boundaries are higher than the official number of administrative boundaries (928) in the district.

Settlement - Level Stats

Settlement	Location (long/lat.)		Population (nos.)	TGA (acres)	Unused area (acres)	Unused area (% of TGA)	Technical potential (acres)	Technical potential (plot nos)	Solar Capacity (MW)	Capacity per resident	Technical potential (%)	% Maximum land use	Maximum Land use type
A. Gudalur	79.34	11.95	1,863	888	249	28	15	3	4	2	2	60	Cropland
Acharampattu	79.78	12.01	1,994	365	79	22	0	0	0	0	0	39	Tree cover
Adanappattu	79.68	12.12	1,433	1,943	473	24	0	0	0	0	0	30	Cropland
Adanur	79.45	12.02	5,112	2,095	361	17	146	11	36	7	7	67	Cropland
Adasal	79.85	12.18	1,480	532	155	29	56	4	14	10	11	60	Cropland
Adavallikuttam	79.84	12.18	1,041	544	86	16	0	0	0	0	0	58	Cropland
Adhichanur	79.19	12.04	2,244	922	408	44	186	6	47	21	20	44	Unused
Adoor Kolapakkam	79.18	12.00	2,214	1,041	320	31	185	7	46	21	18	48	Cropland
Adukkam	79.28	12.07	1,988	455	228	50	0	0	0	0	0	50	Unused
Adukkam RF	79.27	12.05	753	1,929	532	28	0	0	0	0	0	40	Cropland
Agalur	79.48	12.32	1,794	1,190	295	25	121	10	30	17	10	53	Cropland
Agaram (Then)	79.72	12.09	1,938	853	250	29	55	3	14	7	6	38	Cropland
Agaram (Vada)	79.92	12.18	690	392	154	39	0	0	0	0	0	39	Unused

Settlement	Location (long/lat.)		Population (nos.)	TGA (acres)	Unused area (acres)	Unused area (% of TGA)	Technical potential (acres)	Technical potential (plot nos)	Solar Capacity (MW)	Capacity per resident	Technical potential (%)	% Maximum land use	Maximum Land use type
Agaram (Vada) R.F.	79.92	12.23	6,321	3,969	1,034	26	541	9	135	21	14	42	Waterbodies
Agaram Chittamur	79.41	11.98	2,203	804	224	28	103	6	26	12	13	51	Cropland
Agoor	79.57	12.28	3,761	1,493	476	32	285	19	71	19	19	55	Cropland
Akasampattu	79.76	12.01	2,454	669	133	20	0	0	0	0	0	39	Tree cover
Akkanur	79.31	11.89	226	383	40	10	0	1	0	0	0	46	Cropland
Alagaipakkam	79.75	12.21	1,931	392	167	43	91	8	23	12	23	42	Unused
Alagrammam	79.57	12.16	3,235	1,811	193	11	27	2	7	2	1	63	Cropland
Alambadi	79.29	12.00	6,777	1,214	285	23	90	10	23	3	7	67	Cropland
Alampundi	79.33	12.26	7,446	1,949	460	24	53	3	13	2	3	51	Cropland
Alanguppam	79.81	12.20	2,934	1,196	197	16	3	1	1	0	0	35	Cropland
Alankuppam	79.42	11.84	1,013	251	45	18	7	1	2	2	3	41	Waterbodies
Alapakkam	79.93	12.16	1,154	637	247	39	0	0	0	0	0	38	Unused
Alapakkam (Vada)	79.67	12.24	1,429	397	90	23	16	4	4	3	4	44	Cropland
Alathur	79.46	11.95	97	453	140	31	92	5	23	238	20	34	Waterbodies
Alathur	79.87	12.21	2,144	1,096	450	41	378	11	94	44	34	45	Cropland
Aliyur	79.67	11.91	3,035	874	125	14	0	0	0	0	0	52	Cropland
Alliyalamangalam R.F.	79.28	12.44	485	276	127	46	98	2	24	50	35	46	Cropland
Ambuzhukkai	79.65	12.05	299	323	53	16	0	0	0	0	0	34	Tree cover
Ammanambakkam	79.65	12.33	901	555	125	23	0	0	0	0	0	40	Cropland
Ammanankuppam	79.71	11.94	965	444	93	21	42	4	10	11	9	55	Cropland
Amur	79.55	12.17	1,001	523	76	15	15	3	4	4	3	50	Cropland
Anaivari	79.38	11.82	1,717	839	192	23	65	9	16	10	8	44	Cropland
Anaiyeri	79.38	12.14	1,350	510	132	26	75	6	19	14	15	49	Cropland
Anangur	79.49	12.29	549	357	101	28	60	5	15	27	17	47	Cropland
Anangur	79.51	11.90	4,280	1,657	250	15	80	7	20	5	5	46	Cropland

Settlement	Location (long/lat.)		Population (nos.)	TGA (acres)	Unused area (acres)	Unused area (% of TGA)	Technical potential (acres)	Technical potential (plot nos)	Solar Capacity (MW)	Capacity per resident	Technical potential (%)	% Maximum land use	Maximum Land use type
Ananthapuram	79.36	12.12	2,909	1,321	456	35	0	2	0	0	0	38	Cropland
Anathamangalam	79.66	12.33	50	118	60	51	46	2	12	234	39	50	Unused
Anathur	79.45	12.28	1,855	1,117	246	22	125	10	31	17	11	39	Cropland
Anathur	79.47	11.82	3,812	1,661	230	14	0	0	0	0	0	48	Cropland
Andapattu	79.76	12.26	1,643	652	220	34	10	2	2	1	2	40	Cropland
Andarayanur	79.32	11.90	1,928	1,240	78	6	0	0	0	0	0	47	Waterbodies
Andili	79.23	11.96	2,831	549	182	33	88	5	22	8	16	33	Cropland
Anganikuppam	79.57	12.07	485	245	30	12	0	0	0	0	0	55	Cropland
Anilady	79.49	12.16	906	355	88	25	33	5	8	9	9	50	Cropland
Anjancheri	79.44	12.24	1,001	440	71	16	18	2	4	4	4	56	Cropland
Annamangalam	79.40	12.33	2,891	2,105	493	23	13	2	3	1	1	41	Cropland
Annambakkam	79.80	12.30	1,429	1,548	579	37	136	1	34	24	9	37	Unused
Annamputhur	79.67	12.18	1,617	1,395	343	25	3	1	1	1	0	25	Cropland
Anniyur	79.40	12.07	7,605	1,930	467	24	166	12	41	5	9	53	Cropland
Anumandai	79.90	12.13	4,351	1,745	563	32	0	0	0	0	0	32	Unused
Appakkam	79.79	12.09	856	1,095	326	30	0	0	0	0	0	29	Unused
Appampattu	79.41	12.22	1,576	291	53	18	20	3	5	3	7	54	Cropland
Appanandal	79.26	12.03	1,687	1,411	679	48	154	4	39	23	11	48	Unused
Appirambattu	79.80	12.06	1,103	613	110	18	0	0	0	0	0	34	Tree cover
Arakandanallur	79.22	11.98	7,666	1,319	539	41	327	10	82	11	25	40	Unused
Arasalapuram	79.44	12.10	679	239	100	42	23	3	6	8	10	41	Unused
Arasamangalam	79.54	11.86	4,244	1,181	164	14	1	2	0	0	0	59	Cropland
Arasankuppam	79.20	12.02	964	343	153	44	49	3	12	13	14	47	Cropland
Arasur	79.43	11.83	4,165	1,707	513	30	79	6	20	5	5	42	Cropland
Arcadu	79.33	11.94	6,250	2,074	316	15	3	1	1	0	0	50	Cropland

Settlement	Location (long/lat.)		Population (nos.)	TGA (acres)	Unused area (acres)	Unused area (% of TGA)	Technical potential (acres)	Technical potential (plot nos)	Solar Capacity (MW)	Capacity per resident	Technical potential (%)	% Maximum land use	Maximum Land use type
Ariyalur (Thirukkai)	79.37	12.01	6,245	2,104	451	21	156	15	39	6	7	67	Cropland
Ariyalur (Villupuram)	79.48	11.89	1,815	418	121	29	0	0	0	0	0	47	Cropland
Ariyankuppam	79.67	12.13	585	292	110	38	0	0	0	0	0	37	Cropland
Ariyantangal	79.78	12.21	790	272	138	51	98	2	25	31	36	50	Unused
Ariyur	79.43	11.97	3,020	1,477	331	22	134	20	34	11	9	64	Cropland
Arpissampalayam	79.60	11.89	2,985	2,002	133	7	0	0	0	0	0	68	Cropland
Arugavur	79.51	12.30	1,419	1,482	390	26	232	12	58	41	16	55	Cropland
Arukkampoondi	79.36	12.39	636	459	164	36	118	3	29	46	26	43	Cropland
Arulavadi	79.34	11.94	2,244	809	286	35	21	2	5	2	3	56	Cropland
Arumalai	79.27	11.95	542	349	25	7	11	2	3	5	3	50	Cropland
Arumbuli	79.43	12.02	1,219	487	101	21	49	5	12	10	10	72	Cropland
Arumpattu	79.40	11.83	1,900	818	159	19	41	7	10	5	5	56	Cropland
Arunapuram	79.25	12.04	2,847	762	339	45	89	5	22	8	12	44	Unused
Arungurukkai	79.25	11.86	4,660	1,324	139	11	8	2	2	0	1	65	Cropland
Aruvadai	79.82	12.11	546	1,368	565	41	314	9	78	143	23	44	Cropland
Aruvapakkam	79.71	12.14	2,083	658	445	68	0	0	0	0	0	67	Unused
Asappur	79.88	12.23	1,374	1,019	190	19	94	10	23	17	9	45	Cropland
Asarakuppam	79.45	11.99	1,981	601	136	23	40	5	10	5	7	66	Cropland
Asur	79.54	12.24	1,806	770	250	32	147	11	37	20	19	58	Cropland
Asur	79.50	12.06	7,660	3,343	671	20	396	22	99	13	12	54	Cropland
Atchikadu	79.93	12.15	1,693	637	349	55	0	0	0	0	0	54	Unused
Atchipakkam	79.79	12.26	2,144	1,255	437	35	42	2	10	5	3	34	Unused
Athandamarudur	79.26	11.94	1,386	621	69	11	10	2	3	2	2	32	Waterbodies
Athikuppam	79.57	12.08	316	363	57	16	0	0	0	0	0	42	Cropland
Athipattu	79.39	11.82	155	177	57	32	27	3	7	44	16	50	Cropland

Settlement	Location (long/lat.)		Population (nos.)	TGA (acres)	Unused area (acres)	Unused area (% of TGA)	Technical potential (acres)	Technical potential (plot nos)	Solar Capacity (MW)	Capacity per resident	Technical potential (%)	% Maximum land use	Maximum Land use type
Athiyur (Tiruvadi)	79.46	11.88	1,266	233	46	20	9	1	2	2	4	36	Cropland
Attipakkam	79.56	12.35	782	572	129	23	74	3	19	24	13	47	Cropland
Attiyur	79.39	12.18	1,202	671	213	32	28	3	7	6	4	51	Cropland
Attiyur Thirukkai	79.36	12.05	7,467	1,996	356	18	104	11	26	3	5	61	Cropland
Attur	79.69	12.23	2,370	1,141	328	29	189	13	47	20	17	49	Cropland
Avadaiyarpattu	79.57	12.03	2,687	1,624	513	32	378	5	95	35	23	47	Cropland
Avalurpet	79.25	12.33	6,436	2,000	665	33	375	27	94	15	19	44	Cropland
Avanampattu	79.62	12.19	1,053	374	80	21	4	2	1	1	1	53	Cropland
Avanipur	79.82	12.28	3,806	2,598	876	34	379	5	95	25	15	33	Cropland
Avayakuppam	79.58	12.19	2,784	1,803	216	12	26	5	6	2	1	37	Cropland
Avi. Kolapakkam	79.23	11.93	2,093	477	120	25	81	5	20	10	17	40	Cropland
Aviyur	79.49	12.30	1,332	770	212	28	81	9	20	15	11	56	Cropland
Ayandur	79.33	11.97	4,639	1,018	239	24	83	5	21	4	8	56	Cropland
Ayyankovilpattu	79.50	11.96	4,959	1,182	238	20	37	5	9	2	3	44	Cropland
Ayyur Agaram	79.50	11.98	6,455	1,876	367	20	72	9	18	3	4	46	Cropland
Bharatantagal	79.34	12.24	2,003	385	163	42	21	2	5	3	5	45	Cropland
Bodhamangalam	79.25	12.37	273	242	110	46	67	4	17	62	28	45	Unused
Bommayapalayam	79.84	12.01	14,067	2,893	477	16	0	0	0	0	0	41	Tree cover
Bondai	79.50	12.32	1,054	1,161	325	28	124	13	31	29	11	46	Cropland
Brahmadesam	79.47	12.12	2,715	964	174	18	63	9	16	6	7	58	Cropland
Bramaddesam	79.77	12.20	6,257	1,691	667	39	469	8	117	19	28	39	Unused
Buderi	79.48	12.37	401	360	93	26	55	3	14	34	15	59	Cropland
Buderi	79.77	12.24	1,266	339	87	26	0	0	0	0	0	40	Cropland
C. Meyyur	79.30	11.93	2,410	1,167	85	7	0	0	0	0	0	55	Cropland
Chellapiratti	79.42	12.29	1,089	599	199	33	93	7	23	21	15	45	Cropland

Settlement	Location (long/lat.)		Population (nos.)	TGA (acres)	Unused area (acres)	Unused area (% of TGA)	Technical potential (acres)	Technical potential (plot nos)	Solar Capacity (MW)	Capacity per resident	Technical potential (%)	% Maximum land use	Maximum Land use type
Chendur	79.58	12.13	4,514	1,605	281	17	0	0	0	0	0	51	Cropland
Chennappanayakkanpalayam	79.35	12.10	1,837	453	159	35	56	5	14	8	12	52	Cropland
Chettikuppam	79.91	12.11	2,959	1,396	499	36	0	0	0	0	0	35	Waterbodies
Chinnababusamudram	79.69	11.93	7,060	2,017	355	18	48	8	12	2	2	48	Cropland
Chinnagaram	79.45	12.35	1,010	562	134	24	44	5	11	11	8	54	Cropland
Chinnanerkunam	79.58	12.15	2,846	1,394	313	22	2	1	1	0	0	53	Cropland
Chinnanolambai	79.34	12.42	801	484	224	46	194	5	48	60	40	47	Cropland
Chinnasevlai	79.35	11.88	2,254	492	63	13	10	1	2	1	2	42	Cropland
Chinnatachachur	79.51	12.09	2,840	902	290	32	159	11	40	14	18	49	Cropland
Chinnavalavanur	79.60	12.17	1,041	246	41	17	0	0	0	0	0	54	Cropland
Chittamur (Mel)	79.52	12.27	2,603	1,549	412	27	186	10	47	18	12	50	Cropland
Chittanappakkam	79.85	12.16	342	342	104	30	15	3	4	11	4	49	Cropland
Chittani	79.55	12.09	2,032	1,181	285	24	89	6	22	11	8	55	Cropland
Chittatur (Tirukkai)	79.48	11.88	582	647	111	17	0	0	0	0	0	43	Cropland
Chitteri	79.41	12.36	1,280	469	149	32	93	6	23	18	20	40	Cropland
Chokkambattu	79.62	11.86	125	276	46	17	0	0	0	0	0	68	Cropland
Chokkanandal	79.31	12.26	1,158	264	56	21	25	4	6	5	10	68	Cropland
Chokkantagal	79.76	12.21	364	228	115	51	68	5	17	47	30	50	Unused
Chokkapalam	79.39	12.40	1,959	759	280	37	176	9	44	22	23	44	Cropland
Cholaganur	79.46	11.99	3,366	1,422	464	33	150	11	37	11	11	54	Cropland
Cholampundi	79.45	11.98	637	532	177	33	94	11	24	37	18	56	Cropland
Cholangunam	79.43	12.36	2,639	1,378	402	29	125	12	31	12	9	52	Cropland
Dadapuram	79.61	12.35	3,398	2,796	727	26	441	21	110	32	16	55	Cropland
Dalavalappattu	79.54	12.17	479	423	61	14	0	0	0	0	0	75	Cropland
Dalavanur	79.46	12.17	975	965	292	30	128	5	32	33	13	49	Cropland

Settlement	Location (long/lat.)		Population (nos.)	TGA (acres)	Unused area (acres)	Unused area (% of TGA)	Technical potential (acres)	Technical potential (plot nos)	Solar Capacity (MW)	Capacity per resident	Technical potential (%)	% Maximum land use	Maximum Land use type
Dalavanur (Tiruvadi)	79.49	11.87	1,111	361	40	11	0	0	0	0	0	38	Cropland
Damanur	79.46	12.36	1,314	793	265	33	60	6	15	11	8	40	Cropland
Deevanur	79.55	12.26	4,025	1,185	409	35	152	7	38	9	13	50	Cropland
Devadanampettai	79.33	12.18	3,475	1,200	164	14	0	0	0	0	0	54	Cropland
Devanandal	79.84	12.14	577	747	295	40	105	4	26	46	14	43	Cropland
Devandavadi	79.38	12.43	716	512	161	31	76	7	19	27	15	52	Cropland
Devanur	79.38	12.37	3,579	1,896	692	36	524	10	131	37	28	42	Cropland
Devanur	79.21	11.99	9,534	1,053	253	24	97	10	24	3	9	43	Cropland
Eachur	79.45	12.32	2,116	1,423	395	28	40	8	10	5	3	48	Cropland
Echchanguppam	79.47	12.11	2,895	502	77	15	17	4	4	1	3	58	Cropland
Edaimalai	79.52	12.32	244	450	142	32	79	5	20	81	18	49	Cropland
Edapattu	79.24	12.42	7,018	2,827	643	23	296	18	74	11	10	54	Cropland
Elandurai	79.32	11.88	1,786	1,050	273	26	103	4	26	14	10	57	Cropland
Elavalapakkam	79.71	12.21	1,329	495	168	34	64	4	16	12	13	40	Cropland
Elayandapattu	79.61	12.02	1,290	770	112	15	0	0	0	0	0	57	Cropland
Elrampattu	79.25	11.91	2,636	1,006	268	27	157	12	39	15	16	44	Cropland
Elusembon	79.42	12.06	3,879	1,493	281	19	100	12	25	6	7	71	Cropland
Emapper	79.25	11.96	1,355	534	84	16	3	1	1	1	1	35	Cropland
Emappur	79.39	11.88	2,571	1,446	217	15	62	8	16	6	4	60	Cropland
Embalam	79.36	12.30	1,150	492	146	30	98	9	25	21	20	57	Cropland
Enathimangalam	79.40	11.90	2,274	1,003	79	8	15	4	4	2	2	45	Waterbodies
Endiyur	79.69	12.22	3,962	984	262	27	86	8	22	5	9	52	Cropland
Endur	79.80	12.21	2,633	1,312	482	37	331	8	83	31	25	45	Cropland
Ennayiram	79.49	12.13	3,283	1,163	307	26	164	10	41	12	14	49	Cropland
Eppakkam	79.75	12.28	3,022	1,199	263	22	16	2	4	1	1	57	Cropland

Settlement	Location (long/lat.)		Population (nos.)	TGA (acres)	Unused area (acres)	Unused area (% of TGA)	Technical potential (acres)	Technical potential (plot nos)	Solar Capacity (MW)	Capacity per resident	Technical potential (%)	% Maximum land use	Maximum Land use type
Eralur	79.41	11.90	919	363	32	9	0	0	0	0	0	44	Waterbodies
Errambattu	79.48	12.17	270	451	132	29	65	6	16	60	14	56	Cropland
Erumanthangal	79.52	11.95	1,593	193	15	8	2	1	0	0	1	39	Cropland
Esalam	79.50	12.11	3,214	897	109	12	29	5	7	2	3	62	Cropland
Ethanemili	79.55	12.33	1,666	1,604	450	28	291	18	73	44	18	49	Cropland
Evalur	79.68	12.30	665	479	262	55	207	3	52	78	43	54	Unused
Eyyakunnam	79.34	12.31	2,491	854	270	32	157	18	39	16	18	56	Cropland
Eyyal	79.33	12.40	4,424	2,672	869	33	589	19	147	33	22	50	Cropland
Ezhaoui	79.56	12.09	413	549	160	29	27	1	7	16	5	41	Cropland
Ganapathipattu	79.57	12.05	992	612	83	13	0	0	0	0	0	70	Cropland
Gangapuram	79.41	12.37	1,637	647	282	44	224	3	56	34	35	43	Unused
Gangarampalaiyam	79.62	11.91	3,754	1,619	208	13	0	0	0	0	0	56	Cropland
Gangavaram	79.31	12.14	2,229	1,377	260	19	6	1	2	1	0	62	Cropland
Gangavaram R.F.	79.33	12.09	118	621	61	10	0	0	0	0	0	49	Tree cover
Gangavaram R.F.	79.31	12.12	2,168	5,806	765	13	0	0	0	0	0	55	Tree cover
Gingee	79.41	12.26	20,212	2,946	580	20	86	8	22	1	3	41	Cropland
Gramam	79.40	11.85	1,509	1,382	251	18	81	8	20	13	6	49	Cropland
Gudalur (Mel)	79.48	12.15	1,256	735	146	20	35	6	9	7	5	59	Cropland
Guruvammapettai	79.71	12.21	1,943	522	145	28	32	4	8	4	6	53	Cropland
Hanumanthapuram	79.36	12.06	2,604	1,244	250	20	84	6	21	8	7	57	Cropland
Ichcheri	79.71	12.26	2,295	859	253	29	161	12	40	18	19	59	Cropland
Idaichcheri	79.80	12.11	1,155	1,915	573	30	176	2	44	38	9	60	Cropland
Idaiyapattu	79.59	12.05	451	481	45	9	0	0	0	0	0	60	Cropland
Idappalaiyam	79.45	11.96	887	434	97	22	33	5	8	9	8	57	Cropland
Idayalam (Mel)	79.44	12.24	1,733	785	169	21	52	7	13	7	7	53	Cropland

Settlement	Location (long/lat.)		Population (nos.)	TGA (acres)	Unused area (acres)	Unused area (% of TGA)	Technical potential (acres)	Technical potential (plot nos)	Solar Capacity (MW)	Capacity per resident	Technical potential (%)	% Maximum land use	Maximum Land use type
Ilamangalam	79.54	12.29	1,849	1,159	325	28	179	9	45	24	15	48	Cropland
Illangadu	79.59	11.94	1,219	668	108	16	0	0	0	0	0	68	Cropland
Illodu	79.43	12.32	2,987	1,654	553	33	255	17	64	21	15	50	Cropland
Ilvampattu	79.70	12.09	1,278	648	377	58	1	1	0	0	0	58	Unused
Indirasankuppam	79.53	12.29	465	326	60	18	28	3	7	15	9	70	Cropland
Iraiyarur	79.67	12.21	7,648	1,149	358	31	55	5	14	2	5	31	Unused
Irburai	79.80	12.01	10,330	3,034	598	20	0	0	0	0	0	37	Tree cover
Irbuli	79.43	12.38	1,027	642	260	40	166	5	41	40	26	44	Cropland
Iruvelpattu	79.44	11.85	1,801	1,130	233	21	53	5	13	7	5	43	Cropland
Iveli	79.62	12.03	1,088	758	209	28	0	0	0	0	0	55	Cropland
Jaggampettai	79.64	12.20	3,135	996	348	35	40	4	10	3	4	34	Unused
Jambodi	79.44	12.22	2,212	1,110	275	25	97	11	24	11	9	55	Cropland
Janakipettai	79.72	12.22	928	270	71	26	42	6	11	11	16	59	Cropland
Jayankondan	79.42	12.22	4,720	936	259	28	155	12	39	8	17	50	Cropland
Kadagampattu	79.67	12.03	433	489	194	40	0	0	0	0	0	44	Cropland
Kadagampundi	79.43	12.20	1,533	668	197	30	33	5	8	5	5	46	Cropland
Kadaganur	79.26	11.99	2,109	891	185	21	73	11	18	9	8	65	Cropland
Kadali	79.39	12.30	1,263	400	108	27	60	6	15	12	15	52	Cropland
Kadambur	79.47	12.27	810	614	204	33	81	8	20	25	13	38	Cropland
Kadapanandal	79.22	12.34	947	333	102	31	45	7	11	12	13	50	Cropland
Kadapperikuppam	79.74	11.97	1,679	707	66	9	0	0	0	0	0	37	Waterbodies
Kadavambakkam	79.82	12.30	1,589	911	237	26	6	1	2	1	1	35	Cropland
Kadayam	79.32	12.08	997	477	216	45	0	0	0	0	0	52	Cropland
Kadayam R.F.	79.32	12.07	1,829	284	52	18	0	0	0	0	0	59	Cropland
Kadur (S)	79.73	12.30	1,241	183	67	36	0	0	0	0	0	36	Unused

Settlement	Location (long/lat.)		Population (nos.)	TGA (acres)	Unused area (acres)	Unused area (% of TGA)	Technical potential (acres)	Technical potential (plot nos)	Solar Capacity (MW)	Capacity per resident	Technical potential (%)	% Maximum land use	Maximum Land use type
Kaividantagal	79.39	12.43	643	373	135	36	86	5	21	33	23	49	Cropland
Kakkanur	79.38	12.02	5,504	1,597	348	22	100	9	25	5	6	65	Cropland
Kakuppam (I)	79.51	11.96	9,087	536	123	23	0	0	0	0	0	32	Cropland
Kalaiyur	79.49	12.26	1,541	861	194	23	19	3	5	3	2	46	Cropland
Kalanjukuppam	79.65	11.80	1,638	451	60	13	0	0	0	0	0	46	Cropland
Kalathambattu	79.30	12.26	2,421	801	207	26	118	9	30	12	15	58	Cropland
Kalavay (Mel)	79.43	12.27	3,022	984	266	27	90	10	22	7	9	46	Cropland
Kalavay (Then)	79.65	12.18	2,332	1,282	520	41	101	10	25	11	8	40	Cropland
Kalavoi (Vada)	79.82	12.31	444	585	221	38	6	1	1	3	1	37	Unused
Kaliingamalai	79.69	11.99	751	260	96	37	0	0	0	0	0	38	Cropland
Kalithirhalkuppam	79.62	11.93	249	144	14	9	0	0	0	0	0	56	Cropland
Kalittirambattu	79.69	11.96	1,671	382	48	12	14	3	3	2	4	50	Cropland
Kaliyanampundi	79.41	12.09	1,177	784	258	33	138	8	35	29	18	54	Cropland
Kalladikuppam	79.49	12.18	1,716	1,152	219	19	74	10	18	11	6	54	Cropland
Kallakolathur	79.65	12.14	1,617	1,540	721	47	216	8	54	33	14	46	Unused
Kallalipattu	79.46	12.15	1,541	656	122	19	56	6	14	9	8	55	Cropland
Kallandal	79.23	12.04	1,853	985	425	43	331	3	83	45	34	46	Cropland
Kallappattu	79.56	11.95	1,219	654	192	29	131	4	33	27	20	53	Cropland
Kallapuliur	79.43	12.39	1,667	1,440	470	33	319	12	80	48	22	50	Cropland
Kallippattu	79.55	11.85	1,449	378	82	22	0	0	0	0	0	31	Cropland
Kalpakkam	79.59	12.31	765	636	314	49	247	6	62	81	39	49	Unused
Kalpattu	79.36	11.93	3,049	1,488	399	27	242	8	61	20	16	38	Cropland
Kaluperumbakkam	79.83	12.08	1,650	1,408	616	44	243	2	61	37	17	43	Unused
Kamagaram	79.24	12.22	1,219	507	251	49	195	7	49	40	38	49	Unused
Kambur	79.78	12.31	1,780	1,163	545	47	186	4	47	26	16	46	Unused

Settlement	Location (long/lat.)		Population (nos.)	TGA (acres)	Unused area (acres)	Unused area (% of TGA)	Technical potential (acres)	Technical potential (plot nos)	Solar Capacity (MW)	Capacity per resident	Technical potential (%)	% Maximum land use	Maximum Land use type
Kaividantangal	79.39	12.43	643	373	135	36	86	5	21	33	23	49	Cropland
Kakkanur	79.38	12.02	5,504	1,597	348	22	100	9	25	5	6	65	Cropland
Kakuppam (I)	79.51	11.96	9,087	536	123	23	0	0	0	0	0	32	Cropland
Kalaiyur	79.49	12.26	1,541	861	194	23	19	3	5	3	2	46	Cropland
Kalanjukuppam	79.65	11.80	1,638	451	60	13	0	0	0	0	0	46	Cropland
Kalathambattu	79.30	12.26	2,421	801	207	26	118	9	30	12	15	58	Cropland
Kalavay (Mel)	79.43	12.27	3,022	984	266	27	90	10	22	7	9	46	Cropland
Kalavay (Then)	79.65	12.18	2,332	1,282	520	41	101	10	25	11	8	40	Cropland
Kalavoi (Vada)	79.82	12.31	444	585	221	38	6	1	1	3	1	37	Unused
Kaliingamalai	79.69	11.99	751	260	96	37	0	0	0	0	0	38	Cropland
Kalithirthalkuppam	79.62	11.93	249	144	14	9	0	0	0	0	0	56	Cropland
Kalittirambattu	79.69	11.96	1,671	382	48	12	14	3	3	2	4	50	Cropland
Kaliyanampundi	79.41	12.09	1,177	784	258	33	138	8	35	29	18	54	Cropland
Kalladikuppam	79.49	12.18	1,716	1,152	219	19	74	10	18	11	6	54	Cropland
Kallakolathur	79.65	12.14	1,617	1,540	721	47	216	8	54	33	14	46	Unused
Kallalipattu	79.46	12.15	1,541	656	122	19	56	6	14	9	8	55	Cropland
Kallandal	79.23	12.04	1,853	985	425	43	331	3	83	45	34	46	Cropland
Kallappattu	79.56	11.95	1,219	654	192	29	131	4	33	27	20	53	Cropland
Kallapuliur	79.43	12.39	1,667	1,440	470	33	319	12	80	48	22	50	Cropland
Kallippattu	79.55	11.85	1,449	378	82	22	0	0	0	0	0	31	Cropland
Kalpakkam	79.59	12.31	765	636	314	49	247	6	62	81	39	49	Unused
Kalpattu	79.36	11.93	3,049	1,488	399	27	242	8	61	20	16	38	Cropland
Kaluperumbakkam	79.83	12.08	1,650	1,408	616	44	243	2	61	37	17	43	Unused
Kamagaram	79.24	12.22	1,219	507	251	49	195	7	49	40	38	49	Unused
Kambur	79.78	12.31	1,780	1,163	545	47	186	4	47	26	16	46	Unused

Settlement	Location (long/lat.)		Population (nos.)	TGA (acres)	Unused area (acres)	Unused area (% of TGA)	Technical potential (acres)	Technical potential (plot nos)	Solar Capacity (MW)	Capacity per resident	Technical potential (%)	% Maximum land use	Maximum Land use type
Kammandur	79.50	12.22	1,315	1,027	176	17	35	7	9	7	3	68	Cropland
Kammantangal	79.37	12.43	292	477	145	30	59	5	15	51	12	51	Cropland
Kanai	79.41	11.95	3,976	853	240	28	144	8	36	9	17	48	Cropland
Kanakkankuppam	79.34	12.14	2,621	344	64	19	0	0	0	0	0	49	Cropland
Kandachipuram	79.31	12.04	7,588	1,618	736	46	38	5	10	1	2	45	Unused
Kandadu	79.91	12.20	1,505	1,103	309	28	59	5	15	10	5	51	Cropland
Kandalavadi	79.43	11.80	2,645	1,594	275	17	115	7	29	11	7	61	Cropland
Kandamanadi	79.47	11.90	4,751	1,165	410	35	41	2	10	2	4	35	Unused
Kandamanallur	79.42	12.38	1,269	604	237	39	168	10	42	33	28	50	Cropland
Kandamangalam	79.68	11.92	6,982	703	221	31	0	0	0	0	0	33	Cropland
Kandambakkam	79.45	11.91	2,438	1,015	336	33	140	11	35	14	14	42	Cropland
Kandiyamadai	79.43	11.90	125	169	58	34	50	3	12	100	30	46	Cropland
Kangiyapur	79.39	11.98	2,549	1,632	189	12	44	8	11	4	3	61	Cropland
Kanjanur	79.44	12.06	3,144	1,527	314	21	141	17	35	11	9	60	Cropland
Kanjimangalam	79.78	12.11	990	617	109	18	0	0	0	0	0	41	Cropland
Kanjur	79.22	12.17	70	461	153	33	62	7	16	223	13	47	Cropland
Kannalam	79.37	12.33	2,003	855	215	25	97	9	24	12	11	52	Cropland
Kannandal	79.40	12.09	471	261	80	31	16	5	4	9	6	48	Cropland
Kannarampattu	79.40	11.87	2,103	928	198	21	75	9	19	9	8	61	Cropland
Kanniyam	79.63	12.09	625	1,129	537	48	154	2	38	61	14	47	Unused
Kappai	79.45	12.20	1,550	687	206	30	30	4	7	5	4	41	Cropland
Kappalambadi	79.28	12.38	2,839	1,421	493	35	305	15	76	27	21	49	Cropland
Kappiyampuliur	79.54	11.98	5,458	1,342	601	45	249	3	62	11	19	44	Unused
Kappur	79.41	11.91	3,180	1,603	337	21	209	9	52	16	13	54	Cropland
Karadipakkam	79.42	11.88	1,054	577	106	18	55	2	14	13	10	46	Waterbodies

Settlement	Location (long/lat.)		Population (nos.)	TGA (acres)	Unused area (acres)	Unused area (% of TGA)	Technical potential (acres)	Technical potential (plot nos)	Solar Capacity (MW)	Capacity per resident	Technical potential (%)	% Maximum land use	Maximum Land use type
Karai	79.41	12.16	4,302	1,473	424	29	266	12	66	15	18	54	Cropland
Karai R.F.	79.41	12.18	374	1,462	370	25	0	6	0	0	0	37	Tree cover
Karanai (Mel)	79.39	12.39	1,611	798	252	32	182	8	46	28	23	40	Cropland
Karanavur	79.65	12.20	1,354	724	214	30	56	5	14	10	8	37	Cropland
Karapattu	79.44	11.84	1,281	523	64	12	10	3	2	2	2	59	Cropland
Karasanur	79.67	12.07	2,485	1,134	562	50	447	6	112	45	39	49	Unused
Karasur	79.75	11.98	368	110	11	10	0	0	0	0	0	53	Tree cover
Karattai	79.83	12.13	1,582	2,194	469	21	93	8	23	15	4	40	Waterbodies
Karikambattu	79.77	12.33	1,831	501	116	23	0	0	0	0	0	28	Cropland
Karingalippattu	79.39	11.95	2,036	973	209	21	48	5	12	6	5	64	Cropland
Kariyamangalam	79.43	12.30	1,367	1,000	360	36	207	12	52	38	21	50	Cropland
Karunguli	79.46	12.34	967	547	199	36	41	4	10	10	7	48	Cropland
Karuppur	79.77	12.25	928	405	113	28	0	0	0	0	0	40	Cropland
Karuvakshi	79.35	12.08	5,028	1,860	464	25	7	2	2	0	0	49	Cropland
Karuvapakkam	79.61	12.30	1,467	864	317	37	225	9	56	38	26	46	Cropland
Kasbakaranai	79.34	12.01	2,591	1,723	690	40	488	12	122	47	28	48	Cropland
Kasbakaranai	79.46	12.02	1,981	1,334	392	29	273	15	68	34	20	57	Cropland
Kathalampattu	79.26	12.28	265	146	53	36	31	4	8	30	21	60	Cropland
Katrambakkam	79.75	12.06	1,918	1,298	276	21	0	0	0	0	0	35	Cropland
Kattalai	79.72	12.23	2,784	1,334	536	40	415	5	104	37	31	46	Cropland
Kattuchittamur	79.24	12.20	2,134	908	311	34	179	11	45	21	20	48	Cropland
Kattupaiyur	79.23	11.91	3,991	1,532	198	13	74	10	19	5	5	60	Cropland
Kattupunjai	79.81	12.32	554	448	132	29	28	2	7	13	6	29	Unused
Kattusiviri	79.59	12.27	1,630	591	159	27	63	9	16	10	11	64	Cropland
Kavanippakkam	79.50	11.89	1,261	654	127	19	0	0	0	0	0	39	Cropland

Settlement	Location (long/lat.)		Population (nos.)	TGA (acres)	Unused area (acres)	Unused area (% of TGA)	Technical potential (acres)	Technical potential (plot nos)	Solar Capacity (MW)	Capacity per resident	Technical potential (%)	% Maximum land use	Maximum Land use type
Kavarai	79.42	12.21	2,795	450	107	24	68	6	17	6	15	55	Cropland
Kayalmedu	79.84	12.16	237	240	16	6	0	0	0	0	0	46	Cropland
Kayattur	79.58	12.02	1,870	797	150	19	14	4	3	2	2	70	Cropland
Kedar	79.40	12.00	7,217	1,756	313	18	44	6	11	2	2	62	Cropland
Keekaloor	79.27	12.29	419	247	76	31	39	6	10	24	16	55	Cropland
Keelakondur	79.28	11.95	1,973	576	166	29	104	6	26	13	18	36	Cropland
Kenipattu	79.61	12.18	1,241	427	62	14	1	1	0	0	0	50	Cropland
Kenippattu	79.73	12.07	1,402	2,105	753	36	13	1	3	2	1	43	Cropland
Kesavanayakkampalayam	79.90	12.19	527	666	194	29	107	10	27	51	16	58	Cropland
Kiladanur	79.73	12.28	1,630	670	198	30	53	5	13	8	8	45	Cropland
Kilaiyur	79.52	12.23	444	355	46	13	0	0	0	0	0	65	Cropland
Kilappakkam	79.85	12.14	2,335	1,991	602	30	301	9	75	32	15	39	Cropland
Kilarungunam	79.74	12.23	1,166	663	358	54	263	6	66	56	40	54	Unused
Kilavampoondi	79.35	12.40	601	354	108	30	63	4	16	26	18	57	Cropland
Kiledayalam	79.63	12.17	6,771	2,758	1,093	40	164	3	41	6	6	39	Unused
Kilgudalur	79.70	12.26	953	488	147	30	82	2	20	21	17	30	Unused
Kiliyanur	79.75	12.12	7,268	4,041	928	23	0	0	0	0	0	37	Cropland
Kilkaralai	79.69	12.30	502	324	148	46	122	5	31	61	38	45	Unused
Kilkoothapakkam	79.72	12.10	536	745	142	19	13	2	3	6	2	63	Cropland
Kilmalayanur	79.63	12.34	347	297	126	43	68	2	17	49	23	46	Cropland
Kilmambattu	79.48	12.18	827	367	100	27	68	11	17	21	19	61	Cropland
Kilmannur	79.78	12.25	777	262	50	19	0	0	0	0	0	25	Tree cover
Kilmavilangai	79.61	12.33	1,467	620	114	18	5	2	1	1	1	59	Cropland
Kilnemili	79.80	12.24	777	917	348	38	7	2	2	2	1	54	Cropland
Kilpasar	79.78	12.27	2,094	1,457	657	45	0	0	0	0	0	45	Unused

Settlement	Location (long/lat.)		Population (nos.)	TGA (acres)	Unused area (acres)	Unused area (% of TGA)	Technical potential (acres)	Technical potential (plot nos)	Solar Capacity (MW)	Capacity per resident	Technical potential (%)	% Maximum land use	Maximum Land use type
Kilpennathur	79.24	12.23	214	170	65	39	38	4	10	44	22	51	Cropland
Kilpettai	79.92	12.14	1,379	290	126	43	0	0	0	0	0	43	Unused
Kilpudupatti	79.87	12.06	10,038	3,306	943	29	38	2	10	1	1	28	Unused
Kilsevir	79.76	12.25	2,520	1,275	439	34	198	10	50	20	16	45	Cropland
Kilsevir R.F.	79.74	12.24	163	613	429	70	0	2	0	0	0	70	Unused
Kilsithamur	79.67	12.15	2,069	1,504	585	39	0	0	0	0	0	38	Unused
Kilsiviri	79.75	12.18	1,566	587	251	43	190	4	47	30	32	42	Unused
Kilthaniyalampattu	79.47	11.84	478	321	73	23	4	1	1	2	1	58	Cropland
Kilvalai	79.34	12.03	2,786	640	275	43	85	3	21	8	13	42	Unused
Kingilivada	79.28	11.98	663	243	45	19	8	1	2	3	3	58	Cropland
Kirandipuram	79.60	12.30	1,003	474	168	35	106	5	26	26	22	47	Cropland
Kizhur	79.67	11.89	116	122	9	7	0	0	0	0	0	60	Cropland
Kodambadi	79.24	12.37	1,498	737	249	34	141	9	35	23	19	52	Cropland
Kodiam	79.63	12.32	2,132	1,166	355	30	163	11	41	19	14	47	Cropland
Kodima	79.59	12.17	213	353	115	33	31	3	8	37	9	46	Cropland
Kodipakkam (Vada)	79.86	12.21	1,567	1,023	430	42	368	11	92	59	36	42	Unused
Kodippakkam (Ten)	79.71	12.16	1,514	1,685	872	52	205	1	51	34	12	51	Unused
Kodiyur	79.26	11.90	1,898	1,103	258	23	139	8	35	18	13	58	Cropland
Kodukankuppam	79.32	12.35	2,412	855	311	36	224	11	56	23	26	49	Cropland
Kodukkapattu	79.19	12.01	2,334	274	74	27	29	4	7	3	10	45	Cropland
Kodukkur	79.65	12.01	2,244	622	69	11	13	2	3	1	2	58	Cropland
Kodungal	79.32	11.96	2,169	662	167	25	102	3	25	12	15	61	Cropland
Kodur	79.79	12.07	1,794	1,219	278	23	0	0	0	0	0	33	Cropland
Kolippattu	79.37	11.99	2,929	584	90	15	12	5	3	1	2	67	Cropland
Koliyanur	79.55	11.93	10,514	1,086	348	32	135	8	34	3	12	43	Cropland

Settlement	Location (long/lat.)		Population (nos.)	TGA (acres)	Unused area (acres)	Unused area (% of TGA)	Technical potential (acres)	Technical potential (plot nos)	Solar Capacity (MW)	Capacity per resident	Technical potential (%)	% Maximum land use	Maximum Land use type
Kollar	79.60	12.25	3,398	1,553	562	36	152	11	38	11	10	49	Cropland
Kolliyankunam	79.62	12.14	3,348	869	260	30	132	7	33	10	15	48	Cropland
Kollur	79.24	11.98	4,127	1,583	858	54	563	10	141	34	36	54	Unused
Koluveri	79.84	12.09	1,585	3,087	606	20	40	2	10	6	1	36	Cropland
Komadippattu	79.81	12.14	1,041	758	231	30	107	11	27	26	14	35	Cropland
Kommedu	79.45	12.18	1,245	741	272	37	154	5	38	31	21	49	Cropland
Konai	79.39	12.22	4,450	1,880	255	14	9	4	2	1	0	59	Cropland
Konalur	79.55	12.34	234	193	62	32	29	3	7	31	15	58	Cropland
Konalur	79.37	12.14	1,306	729	215	29	38	6	9	7	5	50	Cropland
Konamangalam	79.63	12.08	854	934	517	55	9	1	2	3	1	55	Unused
Kondalamkuppam	79.68	12.04	971	1,258	485	39	0	0	0	0	0	38	Unused
Kondamur	79.72	12.14	2,165	1,641	611	37	22	1	6	3	1	37	Unused
Kondangi	79.45	11.92	1,150	711	229	32	142	6	35	31	20	39	Cropland
Kondur	79.68	11.87	2,480	646	85	13	0	0	0	0	0	61	Cropland
Kongambattu	79.61	11.85	2,466	908	68	8	0	0	0	0	0	53	Cropland
Kongarakondan	79.48	11.87	126	198	35	18	0	0	0	0	0	53	Cropland
Kongarappattu	79.53	12.23	1,819	2,052	440	21	186	21	46	26	9	64	Cropland
Kongarayanur	79.34	11.92	1,024	527	44	8	6	1	2	2	1	40	Cropland
Konkarambundi	79.53	12.08	1,924	803	304	38	148	9	37	19	18	37	Cropland
Konur	79.41	11.94	2,341	719	176	24	80	5	20	9	11	56	Cropland
Koochikolathur	79.74	12.32	1,302	1,226	594	48	276	2	69	53	23	48	Unused
Koonimedu	79.88	12.10	4,990	4,723	1,006	21	56	2	14	3	1	56	Waterbodies
Kooranur	79.41	11.85	84	112	7	6	0	0	0	0	0	42	Waterbodies
Korakkeni	79.63	12.04	1,363	1,147	344	30	0	0	0	0	0	30	Unused
Koralur	79.44	12.08	360	340	92	27	41	4	10	28	12	48	Cropland

Settlement	Location (long/lat.)		Population (nos.)	TGA (acres)	Unused area (acres)	Unused area (% of TGA)	Technical potential (acres)	Technical potential (plot nos)	Solar Capacity (MW)	Capacity per resident	Technical potential (%)	% Maximum land use	Maximum Land use type
Kilpennathur	79.24	12.23	214	170	65	39	38	4	10	44	22	51	Cropland
Kilpettai	79.92	12.14	1,379	290	126	43	0	0	0	0	0	43	Unused
Kilpudupatti	79.87	12.06	10,038	3,306	943	29	38	2	10	1	1	28	Unused
Kilsevir	79.76	12.25	2,520	1,275	439	34	198	10	50	20	16	45	Cropland
Kilsevir R.F.	79.74	12.24	163	613	429	70	0	2	0	0	0	70	Unused
Kilsithamur	79.67	12.15	2,069	1,504	585	39	0	0	0	0	0	38	Unused
Kilsiviri	79.75	12.18	1,566	587	251	43	190	4	47	30	32	42	Unused
Kilthaniyalampattu	79.47	11.84	478	321	73	23	4	1	1	2	1	58	Cropland
Kilvalai	79.34	12.03	2,786	640	275	43	85	3	21	8	13	42	Unused
Kingilivada	79.28	11.98	663	243	45	19	8	1	2	3	3	58	Cropland
Kirandipuram	79.60	12.30	1,003	474	168	35	106	5	26	26	22	47	Cropland
Kizhur	79.67	11.89	116	122	9	7	0	0	0	0	0	60	Cropland
Kodambadi	79.24	12.37	1,498	737	249	34	141	9	35	23	19	52	Cropland
Kodiam	79.63	12.32	2,132	1,166	355	30	163	11	41	19	14	47	Cropland
Kodima	79.59	12.17	213	353	115	33	31	3	8	37	9	46	Cropland
Kodipakkam (Vada)	79.86	12.21	1,567	1,023	430	42	368	11	92	59	36	42	Unused
Kodipakkam (Ten)	79.71	12.16	1,514	1,685	872	52	205	1	51	34	12	51	Unused
Kodiyur	79.26	11.90	1,898	1,103	258	23	139	8	35	18	13	58	Cropland
Kodukankuppam	79.32	12.35	2,412	855	311	36	224	11	56	23	26	49	Cropland
Kodukkapattu	79.19	12.01	2,334	274	74	27	29	4	7	3	10	45	Cropland
Kodukkur	79.65	12.01	2,244	622	69	11	13	2	3	1	2	58	Cropland
Kodungal	79.32	11.96	2,169	662	167	25	102	3	25	12	15	61	Cropland
Kodur	79.79	12.07	1,794	1,219	278	23	0	0	0	0	0	33	Cropland
Kolippattu	79.37	11.99	2,929	584	90	15	12	5	3	1	2	67	Cropland
Koliyanur	79.55	11.93	10,514	1,086	348	32	135	8	34	3	12	43	Cropland

Settlement	Location (long/lat.)		Population (nos.)	TGA (acres)	Unused area (acres)	Unused area (% of TGA)	Technical potential (acres)	Technical potential (plot nos)	Solar Capacity (MW)	Capacity per resident	Technical potential (%)	% Maximum land use	Maximum Land use type
Kollar	79.60	12.25	3,398	1,553	562	36	152	11	38	11	10	49	Cropland
Kolliyankunam	79.62	12.14	3,348	869	260	30	132	7	33	10	15	48	Cropland
Kollur	79.24	11.98	4,127	1,583	858	54	563	10	141	34	36	54	Unused
Koluveri	79.84	12.09	1,585	3,087	606	20	40	2	10	6	1	36	Cropland
Komadippattu	79.81	12.14	1,041	758	231	30	107	11	27	26	14	35	Cropland
Kommedu	79.45	12.18	1,245	741	272	37	154	5	38	31	21	49	Cropland
Konai	79.39	12.22	4,450	1,880	255	14	9	4	2	1	0	59	Cropland
Konalur	79.55	12.34	234	193	62	32	29	3	7	31	15	58	Cropland
Konalur	79.37	12.14	1,306	729	215	29	38	6	9	7	5	50	Cropland
Konamangalam	79.63	12.08	854	934	517	55	9	1	2	3	1	55	Unused
Kondalamkuppam	79.68	12.04	971	1,258	485	39	0	0	0	0	0	38	Unused
Kondamur	79.72	12.14	2,165	1,641	611	37	22	1	6	3	1	37	Unused
Kondangi	79.45	11.92	1,150	711	229	32	142	6	35	31	20	39	Cropland
Kondur	79.68	11.87	2,480	646	85	13	0	0	0	0	0	61	Cropland
Kongambattu	79.61	11.85	2,466	908	68	8	0	0	0	0	0	53	Cropland
Kongarakondan	79.48	11.87	126	198	35	18	0	0	0	0	0	53	Cropland
Kongarappattu	79.53	12.23	1,819	2,052	440	21	186	21	46	26	9	64	Cropland
Kongarayanur	79.34	11.92	1,024	527	44	8	6	1	2	2	1	40	Cropland
Konkarambundi	79.53	12.08	1,924	803	304	38	148	9	37	19	18	37	Cropland
Konur	79.41	11.94	2,341	719	176	24	80	5	20	9	11	56	Cropland
Koochikolathur	79.74	12.32	1,302	1,226	594	48	276	2	69	53	23	48	Unused
Koonimedu	79.88	12.10	4,990	4,723	1,006	21	56	2	14	3	1	56	Waterbodies
Kooranur	79.41	11.85	84	112	7	6	0	0	0	0	0	42	Waterbodies
Korakkeni	79.63	12.04	1,363	1,147	344	30	0	0	0	0	0	30	Unused
Koralur	79.44	12.08	360	340	92	27	41	4	10	28	12	48	Cropland

Settlement	Location (long/lat.)		Population (nos.)	TGA (acres)	Unused area (acres)	Unused area (% of TGA)	Technical potential (acres)	Technical potential (plot nos)	Solar Capacity (MW)	Capacity per resident	Technical potential (%)	% Maximum land use	Maximum Land use type
Koravanandal	79.49	12.28	549	342	67	20	25	4	6	11	7	39	Cropland
Kottaikadu	79.99	12.25	75	423	21	5	0	0	0	0	0	81	Waterbodies
Kottaipoondi	79.30	12.38	6,801	2,804	746	27	364	32	91	13	13	55	Cropland
Kottakuppam	79.83	11.97	13,341	2,491	446	18	0	0	0	0	0	37	Tree cover
Kottamarudur	79.20	12.00	4,820	1,313	350	27	179	10	45	9	14	44	Cropland
Kottambakkam	79.63	11.90	477	206	16	8	0	0	0	0	0	50	Cropland
Kottammangalam	79.42	11.93	748	266	99	37	14	4	4	5	5	40	Cropland
Kottiyampundi	79.49	12.04	3,865	733	120	16	47	7	12	3	6	62	Cropland
Kovadi	79.71	12.18	3,199	847	350	41	0	0	0	0	0	41	Unused
Kovilporaiyur	79.28	12.33	5,425	1,945	721	37	476	21	119	22	24	52	Cropland
Krishnapuram	79.68	11.83	2,965	1,278	55	4	0	0	0	0	0	71	Cropland
Kuchchippalaiyam (Vada)	79.52	11.98	3,352	1,665	482	29	195	7	49	15	12	47	Cropland
Kuchipalaiyam (Ten)	79.52	11.86	892	525	48	9	0	0	0	0	0	54	Waterbodies
Kudamurutti	79.19	11.98	1,853	248	59	24	17	3	4	2	7	25	Cropland
Kudumiyankuppam	79.59	11.93	803	183	42	23	0	0	0	0	0	54	Cropland
Kuduvampoondi	79.36	12.40	1,402	806	415	51	333	3	83	59	41	51	Unused
Kulapakkam (Vada)	79.75	12.23	25	218	97	45	67	4	17	668	31	44	Unused
Kulathur	79.85	12.19	1,229	1,090	405	37	335	3	84	68	31	38	Unused
Kulathur	79.48	11.90	2,757	728	281	39	56	3	14	5	8	43	Cropland
Kulirsunai	79.33	12.04	1,318	569	172	30	0	0	0	0	0	47	Cropland
Kumalampattu	79.78	12.15	402	287	189	66	0	0	0	0	0	65	Unused
Kumalampattu R.F.	79.79	12.16	98	1,086	662	61	0	0	0	0	0	61	Unused
Kumulam	79.62	11.95	2,618	454	70	15	0	0	0	0	0	51	Cropland
Kundalampattu	79.27	12.35	3,109	1,237	434	35	273	16	68	22	22	50	Cropland
Kundalappuliyur	79.45	12.04	4,003	1,477	517	35	332	20	83	21	22	54	Cropland

Settlement	Location (long/lat.)		Population (nos.)	TGA (acres)	Unused area (acres)	Unused area (% of TGA)	Technical potential (acres)	Technical potential (plot nos)	Solar Capacity (MW)	Capacity per resident	Technical potential (%)	% Maximum land use	Maximum Land use type
Kunichampet	79.64	12.00	172	110	7	6	0	0	0	0	0	62	Cropland
Kunnam	79.68	12.09	1,062	963	352	37	105	8	26	25	11	36	Unused
Kunnappakkam	79.77	12.23	727	377	70	18	25	2	6	9	7	42	Cropland
Kunnathur Thangal (I)	79.44	12.04	180	117	30	26	7	1	2	10	6	56	Cropland
Kuppam	79.41	11.97	1,607	1,116	269	24	112	13	28	17	10	54	Cropland
Kuppam	79.71	11.99	103	107	24	23	0	0	0	0	0	50	Cropland
Kuralur	79.60	12.11	953	1,064	510	48	70	1	18	18	7	47	Unused
Kurampalaiyam	79.66	11.97	945	515	75	15	30	2	8	8	6	63	Cropland
Kuramparam R.F.	79.90	12.21	288	533	101	19	0	2	0	0	0	53	Tree cover
Kurinjipai	79.46	12.23	1,637	1,055	278	26	63	8	16	10	6	47	Cropland
Kurumparam	79.89	12.21	1,053	949	364	38	244	7	61	58	26	38	Unused
Kurur	79.82	12.21	1,317	719	200	28	79	5	20	15	11	54	Cropland
Kuttampundi	79.56	12.06	831	555	161	29	112	2	28	34	20	53	Cropland
Kuttapakkam (Mel)	79.54	12.30	428	261	103	39	63	4	16	37	24	39	Cropland
Kutteripattu	79.60	12.16	1,768	480	105	22	13	2	3	2	3	58	Cropland
Kuzhapalur	79.27	12.27	1,306	337	87	26	20	4	5	4	6	56	Cropland
Madampattu	79.38	11.82	1,323	477	160	34	61	5	15	12	13	54	Cropland
Madappundi	79.22	12.18	1,652	1,079	376	35	230	12	57	35	21	50	Cropland
Madavantangal	79.78	12.22	539	346	198	57	156	2	39	73	45	57	Unused
Madavilagam	79.30	12.03	3,886	696	154	22	49	7	12	3	7	51	Cropland
Madirimangalam	79.54	11.96	1,011	454	146	32	21	4	5	5	5	54	Cropland
Maduraipakkam	79.61	12.01	5,335	2,103	368	17	63	9	16	3	3	52	Cropland
Mahadevimangalam	79.41	12.31	1,210	716	229	32	79	7	20	16	11	49	Cropland
Maharajapuram	79.53	11.95	513	249	56	23	40	6	10	20	16	65	Cropland
Mailam	79.61	12.13	5,178	1,353	671	50	438	8	109	21	32	49	Unused

Settlement	Location (long/lat.)		Population (nos.)	TGA (acres)	Unused area (acres)	Unused area (% of TGA)	Technical potential (acres)	Technical potential (plot nos)	Solar Capacity (MW)	Capacity per resident	Technical potential (%)	% Maximum land use	Maximum Land use type
Malaiyampattu	79.38	11.86	1,293	541	72	13	3	1	1	1	1	62	Cropland
Malaiyanur (Mel.)	79.33	12.33	6,357	1,575	543	34	311	16	78	12	20	46	Cropland
Malarajampattam	79.60	11.93	485	244	54	22	0	0	0	0	0	59	Cropland
Malarasankuppam	79.29	12.11	1,359	599	228	38	0	0	0	0	0	46	Cropland
Malavantangal	79.27	12.09	4,100	1,440	658	46	0	0	0	0	0	45	Unused
Malavarayanur	79.55	11.90	443	218	22	10	0	0	0	0	0	83	Cropland
Malligappattu	79.37	11.97	1,881	819	122	15	20	4	5	3	2	66	Cropland
Mamandur	79.41	11.82	760	623	118	19	46	4	12	15	7	50	Cropland
Mambakkam	79.53	12.36	841	602	159	26	62	4	16	19	10	55	Cropland
Mambalapattu	79.37	11.96	4,962	1,849	537	29	100	10	25	5	5	52	Cropland
Manakkuppam	79.33	11.87	3,807	1,430	305	21	162	7	40	11	11	58	Cropland
Manalapadi	79.35	12.21	2,081	709	143	20	0	0	0	0	0	47	Cropland
Manampoondi	79.20	11.98	7,500	516	98	19	31	4	8	1	6	26	Cropland
Manandal	79.29	12.30	2,064	1,139	403	35	262	14	66	32	23	52	Cropland
Mandagappattu (E)	79.45	12.11	1,842	740	126	17	32	5	8	4	4	61	Cropland
Mandagappattu (Mitta)	79.67	11.88	5,551	1,430	205	14	0	0	0	0	0	48	Cropland
Mandaperumpakkam	79.78	12.23	577	309	84	27	37	1	9	16	12	47	Cropland
Mangalam	79.72	12.27	1,241	524	170	32	83	6	21	17	16	45	Cropland
Mangkkuppam	79.61	11.93	914	146	18	13	0	0	0	0	0	55	Cropland
Maniyampattu	79.51	12.23	122	292	48	17	0	1	0	0	0	54	Cropland
Mannadipet	79.62	11.98	125	111	12	11	0	0	0	0	0	81	Cropland
Mannampoondi	79.56	12.29	1,016	639	248	39	180	8	45	44	28	47	Cropland
Mannur (Mel.)	79.38	12.31	1,263	641	192	30	112	8	28	22	17	50	Cropland
Manoor	79.82	12.18	5,515	2,608	587	22	0	0	0	0	0	46	Cropland
Mansurabad	79.23	12.42	379	169	71	42	56	5	14	37	33	42	Unused

Settlement	Location (long/lat.)		Population (nos.)	TGA (acres)	Unused area (acres)	Unused area (% of TGA)	Technical potential (acres)	Technical potential (plot nos)	Solar Capacity (MW)	Capacity per resident	Technical potential (%)	% Maximum land use	Maximum Land use type
Manur	79.67	12.22	8,413	771	334	43	146	8	36	4	19	43	Unused
Maragathapuram	79.43	11.90	2,398	1,454	389	27	233	9	58	24	16	39	Cropland
Marakkanam	79.96	12.21	17,503	7,802	3,007	39	271	5	68	4	3	38	Unused
Marakkanam R.F.	79.93	12.19	790	944	564	60	0	2	0	0	0	59	Unused
Marakonam	79.37	12.42	1,594	1,050	395	38	220	14	55	34	21	45	Cropland
Marangiyur	79.38	11.91	693	683	58	9	7	1	2	2	1	61	Waterbodies
Maruderi	79.52	12.25	1,229	246	54	22	1	1	0	0	0	42	Cropland
Marur	79.51	12.17	192	922	231	25	113	6	28	147	12	48	Cropland
Mathur	79.61	11.97	2,632	1,237	153	12	4	2	1	0	0	55	Cropland
Mattaparai	79.44	12.15	1,369	828	227	27	119	13	30	22	14	57	Cropland
Mattur	79.83	12.04	6,116	3,097	697	23	0	0	0	0	0	39	Cropland
MatturTirukkai	79.41	12.14	949	1,080	400	37	292	7	73	77	27	45	Cropland
Mavanandal	79.40	12.31	1,655	701	193	28	47	8	12	7	7	49	Cropland
Mavattambadi	79.43	12.19	923	488	135	28	69	6	17	19	14	54	Cropland
Mavilangai (Mel)	79.60	12.33	765	350	47	14	15	1	4	5	4	47	Cropland
Mazhavarayanur	79.37	11.89	497	528	99	19	21	4	5	11	4	61	Cropland
Mel Sevalambadi	79.29	12.41	3,335	1,115	178	16	44	12	11	3	4	61	Cropland
Melacheri	79.39	12.28	2,499	973	235	24	55	7	14	6	6	52	Cropland
Meladhanur	79.64	12.33	1,260	895	226	25	1	1	0	0	0	47	Cropland
Melakondur	79.27	11.96	1,581	240	60	25	23	5	6	4	10	62	Cropland
Melamangalam	79.41	11.87	1,602	766	75	10	7	2	2	1	1	58	Cropland
Melarangunam	79.30	12.28	2,412	804	266	33	145	16	36	15	18	59	Cropland
Melarangunam	79.38	12.16	644	414	94	23	0	0	0	0	0	43	Cropland
Melathipakkam	79.53	12.32	1,045	888	334	38	222	7	56	53	25	49	Cropland
Melathipattu	79.28	12.27	4,229	1,949	695	36	464	16	116	27	24	49	Cropland

Settlement	Location (long/lat.)		Population (nos.)	TGA (acres)	Unused area (acres)	Unused area (% of TGA)	Technical potential (acres)	Technical potential (plot nos)	Solar Capacity (MW)	Capacity per resident	Technical potential (%)	% Maximum land use	Maximum Land use type
Melathur	79.52	12.28	279	151	19	13	7	2	2	7	5	63	Cropland
Melkaranai	79.43	12.09	7,300	1,221	295	24	64	12	16	2	5	59	Cropland
Melkondai	79.53	12.06	1,732	1,200	332	28	181	7	45	26	15	50	Cropland
Melkondai R.F.	79.54	12.06	222	120	23	20	6	1	2	7	5	35	Cropland
Melmambattu	79.33	12.32	1,080	644	250	39	192	16	48	45	30	57	Cropland
Melolakkur	79.49	12.34	1,864	1,521	383	25	166	12	41	22	11	46	Cropland
Melpadi	79.55	11.95	3,338	982	243	25	71	6	18	5	7	61	Cropland
Melpakkam	79.65	12.28	2,269	1,666	637	38	392	13	98	43	24	41	Cropland
Melpettai	79.69	12.27	752	377	183	49	56	3	14	19	15	48	Unused
Melsiviri	79.55	12.36	706	337	85	25	26	4	7	9	8	43	Cropland
Melthaniyalampattu	79.46	11.84	1,365	612	47	8	6	2	2	1	1	54	Cropland
Melvalai	79.33	12.03	3,118	618	394	64	97	1	24	8	16	63	Unused
Mettupalaiyam	79.60	11.84	2,014	804	96	12	0	0	0	0	0	50	Cropland
Minamur	79.43	12.21	2,046	527	110	21	22	6	5	3	4	46	Cropland
Modaiyur	79.49	12.24	2,168	2,368	597	25	254	14	63	29	11	53	Cropland
Modipattu	79.39	12.43	190	265	127	48	94	6	23	124	35	48	Unused
Mohalar	79.24	11.87	29	106	27	25	0	0	0	0	0	43	Waterbodies
Mokshakulam	79.60	11.87	1,704	669	122	18	0	0	0	0	0	54	Cropland
Molasur	79.69	12.20	5,291	1,994	836	42	26	3	7	1	1	41	Unused
Mudaliyarkuppam	79.61	11.96	429	372	51	14	0	0	0	0	0	61	Cropland
Mudalur	79.25	11.93	1,822	563	148	26	73	8	18	10	13	39	Cropland
Mugaiyur	79.32	11.98	5,994	1,637	680	42	415	16	104	17	25	42	Cropland
Mukkunam	79.47	12.33	505	740	271	37	16	4	4	8	2	44	Cropland
Mullur	79.36	12.15	1,228	1,215	370	30	0	0	0	0	0	43	Cropland
Mundiyambakkam	79.52	12.00	9,475	653	153	23	23	5	6	1	4	41	Cropland

Settlement	Location (long/lat.)		Population (nos.)	TGA (acres)	Unused area (acres)	Unused area (% of TGA)	Technical potential (acres)	Technical potential (plot nos)	Solar Capacity (MW)	Capacity per resident	Technical potential (%)	% Maximum land use	Maximum Land use type
Mungilpattu	79.61	11.98	1,745	990	89	9	0	0	0	0	0	52	Cropland
Muppuli	79.59	12.19	589	301	96	32	38	5	9	16	13	51	Cropland
Murukeri	79.84	12.20	1,793	151	47	31	0	0	0	0	0	35	Cropland
Murukkam	79.70	12.10	567	1,135	369	32	0	0	0	0	0	32	Unused
Muttakadu R.F.	79.38	12.23	732	3,116	565	18	0	0	0	0	0	51	Tree cover
Muttarampattu	79.66	11.98	1,736	730	62	9	7	1	2	1	1	40	Cropland
Muttatur	79.43	12.11	10,708	2,080	528	25	262	19	65	6	13	51	Cropland
Nadukuppam	79.88	12.15	6,294	7,416	2,260	30	1,348	35	337	54	18	36	Waterbodies
Naduvanandal	79.58	12.29	2,821	1,566	647	41	463	10	116	41	30	48	Cropland
Nagalampattu	79.24	12.16	488	405	140	35	55	6	14	28	14	43	Cropland
Nagalpakkam	79.85	12.27	410	683	252	37	122	6	31	74	18	36	Unused
Nagandur	79.53	12.18	1,871	1,175	282	24	94	11	23	13	8	65	Cropland
Nagar	79.85	12.25	4,501	2,629	590	22	274	18	68	15	10	56	Cropland
Nagar	79.43	12.13	1,108	387	91	24	17	3	4	4	4	45	Cropland
Nagavaram	79.59	12.33	1,831	467	110	24	68	1	17	9	15	52	Cropland
Nallampillaipetral	79.25	12.18	2,691	1,919	687	36	242	18	60	22	13	47	Cropland
Nallamur	79.63	12.15	1,755	823	270	33	69	5	17	10	8	48	Cropland
Nallapalayam	79.30	12.07	4,937	1,836	729	40	139	6	35	7	8	50	Cropland
Nallathur	79.74	12.30	2,056	475	144	30	0	0	0	0	0	30	Unused
Nallavur	79.75	12.14	2,299	1,701	618	36	209	1	52	23	12	36	Unused
Nallur	79.82	12.26	790	522	89	17	44	5	11	14	8	62	Cropland
Nalmukkal	79.77	12.21	1,806	671	318	47	244	6	61	34	36	47	Unused
Nandipuram	79.31	12.43	1,169	618	240	39	163	5	41	35	26	49	Cropland
Nandivadi	79.46	12.09	3,989	855	163	19	48	5	12	3	6	61	Cropland
Nangathur	79.41	12.12	2,750	1,193	393	33	263	9	66	24	22	47	Cropland

Settlement	Location (long/lat.)		Population (nos.)	TGA (acres)	Unused area (acres)	Unused area (% of TGA)	Technical potential (acres)	Technical potential (plot nos)	Solar Capacity (MW)	Capacity per resident	Technical potential (%)	% Maximum land use	Maximum Land use type
Nangilikondan	79.46	12.26	671	432	91	21	4	2	1	1	1	40	Cropland
Nangiyandal	79.50	12.30	453	517	155	30	75	4	19	41	14	42	Cropland
Nangunam	79.75	12.30	1,329	501	146	29	61	4	15	12	12	56	Cropland
Nannadu	79.45	11.94	914	472	112	24	61	4	15	17	13	40	Cropland
Nannattampalaiyam	79.54	11.90	1,053	748	59	8	11	2	3	3	1	84	Cropland
Naraiyur	79.57	11.94	2,147	817	189	23	128	6	32	15	16	58	Cropland
Naramagani	79.81	12.26	276	142	23	16	0	0	0	0	0	56	Cropland
Naranamangalam	79.29	12.40	1,080	907	229	25	123	7	31	28	14	52	Cropland
Narasinganur	79.46	12.08	1,496	876	242	28	126	8	32	21	14	50	Cropland
Narasingarayanpettai	79.41	12.24	3,527	784	237	30	113	8	28	8	14	45	Cropland
Nattamur II Bit RF	79.28	11.87	223	3,580	2,949	82	0	3	0	0	0	82	Unused
Nattarmangalam	79.50	12.27	314	527	150	28	43	5	11	34	8	57	Cropland
Navamal Marudur	79.68	11.90	2,689	1,034	231	22	0	0	0	0	0	44	Cropland
Navamalkapper	79.72	11.90	5,112	925	131	14	8	1	2	0	1	53	Cropland
Nayampadi	79.33	12.22	3,553	1,038	277	27	68	8	17	5	7	56	Cropland
Nayanur	79.21	12.02	2,365	934	286	31	102	3	25	11	11	53	Cropland
Nayanur RF	79.22	12.02	301	1,766	1,499	85	0	2	0	0	0	84	Unused
Nedumozhianur	79.55	12.14	3,059	2,106	445	21	89	9	22	7	4	52	Cropland
Neduntondi	79.57	12.35	437	279	99	35	65	4	16	37	23	37	Cropland
Neerperuthagaram	79.53	12.35	838	723	246	34	153	10	38	46	21	52	Cropland
Neganur	79.45	12.30	4,659	1,930	463	24	193	16	48	10	10	58	Cropland
Nemili (Mel)	79.35	12.41	1,524	1,058	412	39	261	13	65	43	25	47	Cropland
Nemili (V)	79.66	12.06	2,598	831	428	51	0	0	0	0	0	51	Unused
Nemur	79.44	12.09	2,383	624	209	34	132	9	33	14	21	46	Cropland
Nerkunam	79.24	11.96	813	447	126	28	14	3	4	4	3	38	Cropland

Settlement	Location (long/lat.)		Population (nos.)	TGA (acres)	Unused area (acres)	Unused area (% of TGA)	Technical potential (acres)	Technical potential (plot nos)	Solar Capacity (MW)	Capacity per resident	Technical potential (%)	% Maximum land use	Maximum Land use type
Nerkunam	79.67	11.98	1,664	878	84	10	25	2	6	4	3	63	Cropland
Nerkunam (Then)	79.72	12.19	1,981	685	218	32	27	3	7	3	4	37	Cropland
Nerkunam (Vada)	79.82	12.24	3,862	1,771	373	21	172	16	43	11	10	59	Cropland
Nesal	79.82	12.05	2,083	1,153	123	11	0	0	0	0	0	52	Tree cover
Nettiyur	79.60	12.22	1,392	695	179	26	0	1	0	0	0	56	Cropland
Neykuppi	79.64	12.29	2,069	1,038	390	38	192	12	48	23	19	46	Cropland
Nochaloor	79.29	12.35	3,771	1,580	480	30	292	19	73	19	19	50	Cropland
Nolambur	79.73	12.26	5,780	1,971	415	21	208	14	52	9	11	63	Cropland
Oddambattu	79.43	12.15	2,020	812	190	23	95	11	24	12	12	55	Cropland
Oddampattu	79.25	12.06	3,554	1,482	548	37	64	4	16	5	4	46	Cropland
Odiyathur	79.36	12.21	2,003	533	75	14	0	0	0	0	0	57	Cropland
Oduvankuppam	79.32	12.02	4,187	864	307	36	164	8	41	10	19	53	Cropland
Olagalampundi	79.48	12.04	1,967	1,109	352	32	250	6	63	32	23	56	Cropland
Olagapuram	79.77	12.17	3,691	2,228	1,031	46	457	11	114	31	21	46	Unused
Olakkur Kilpadi	79.73	12.32	3,911	1,345	606	45	151	3	38	10	11	45	Unused
Olakkur Melpadi	79.70	12.32	4,186	2,572	922	36	578	20	145	35	22	37	Cropland
Olundiappattu	79.77	12.06	2,206	2,127	433	20	0	0	0	0	0	32	Tree cover
Omipper	79.86	12.17	1,417	1,124	310	28	151	9	38	27	13	58	Cropland
Ommandur	79.69	12.16	2,995	2,231	796	36	0	0	0	0	0	35	Unused
Ongur	79.79	12.32	2,041	2,262	992	44	294	3	74	36	13	43	Unused
Orathur	79.49	12.01	7,286	1,721	588	34	411	14	103	14	24	46	Cropland
Orukodi	79.43	11.92	416	240	59	25	23	4	6	14	9	63	Cropland
Othiyathur	79.36	12.02	3,868	1,067	298	28	135	11	34	9	13	60	Cropland
Ottai	79.73	12.01	971	1,302	131	10	0	0	0	0	0	41	Cropland
Ozhukarai	79.80	12.03	1,221	120	24	20	0	0	0	0	0	28	Tree cover

Settlement	Location (long/lat.)		Population (nos.)	TGA (acres)	Unused area (acres)	Unused area (% of TGA)	Technical potential (acres)	Technical potential (plot nos)	Solar Capacity (MW)	Capacity per resident	Technical potential (%)	% Maximum land use	Maximum Land use type
Padamangalam	79.60	12.18	802	553	185	33	118	12	29	37	21	50	Cropland
Padippallam	79.35	12.17	2,621	1,461	305	21	41	4	10	4	3	53	Cropland
Padippallam R.F.	79.37	12.19	1,080	2,829	610	22	0	0	0	0	0	31	Tree cover
Padirapuliyur	79.58	12.10	3,649	2,315	335	14	0	0	0	0	0	36	Cropland
Padiri	79.76	12.31	3,473	989	386	39	35	2	9	3	4	39	Unused
Pagandai	79.59	11.98	2,770	763	106	14	16	2	4	1	2	81	Waterbodies
Pagandai	79.62	11.82	0	123	4	3	0	0	0	0	0	66	Cropland
Paiyur	79.35	11.91	2,786	1,844	238	13	0	0	0	0	0	54	Cropland
Pakkam	79.27	12.21	2,081	1,620	652	40	198	6	50	24	12	40	Cropland
Pakkam	79.68	11.85	4,363	1,671	156	9	0	0	0	0	0	59	Cropland
Pakkamalai R.F.	79.29	12.18	1,219	10,654	2,957	28	0	0	0	0	0	42	Tree cover
Pakkiripalayam	79.69	11.97	3,300	466	122	26	0	0	0	0	0	37	Cropland
Palakuppam	79.62	12.25	1,906	1,092	623	57	226	8	56	30	21	57	Unused
Palampoondi	79.34	12.38	549	341	110	32	71	5	18	32	21	52	Cropland
Palamukkal	79.73	12.19	903	679	207	30	82	6	21	23	12	36	Cropland
Palapattu	79.56	12.11	100	548	124	23	0	0	0	0	0	40	Cropland
Palappattu	79.43	12.18	2,255	996	244	25	90	13	23	10	9	46	Cropland
Palavalam	79.27	12.14	1,533	1,005	271	27	10	1	3	2	1	44	Cropland
Palichcheri	79.64	11.89	2,068	733	112	15	0	0	0	0	0	48	Cropland
Pallikulam	79.53	12.30	1,105	546	158	29	99	3	25	22	18	45	Cropland
Pallineriyar	79.65	11.90	900	443	43	10	0	0	0	0	0	50	Cropland
Pallipakkam	79.74	12.29	1,856	606	87	14	16	3	4	2	3	67	Cropland
Pallippuduppattu	79.65	11.88	4,630	1,573	195	12	0	0	0	0	0	57	Cropland
Pallitennal	79.73	11.91	6,555	1,123	159	14	9	2	2	0	1	48	Cropland
Palliyandur	79.38	11.99	2,022	570	88	15	27	3	7	3	5	63	Cropland

Settlement	Location (long/lat.)		Population (nos.)	TGA (acres)	Unused area (acres)	Unused area (% of TGA)	Technical potential (acres)	Technical potential (plot nos)	Solar Capacity (MW)	Capacity per resident	Technical potential (%)	% Maximum land use	Maximum Land use type
Pampundi	79.60	12.28	865	1,175	364	31	212	18	53	61	18	58	Cropland
Panaiyapuram	79.53	12.00	9,627	1,284	326	25	31	5	8	1	2	50	Cropland
Panaiyur	79.79	12.28	389	639	307	48	24	1	6	16	4	48	Unused
Panamalai	79.37	12.10	10,205	2,361	505	21	145	10	36	4	6	35	Cropland
Panampattu	79.52	11.93	19,393	2,160	628	29	338	12	85	4	16	29	Unused
Pananguppam	79.55	11.92	9,863	634	182	29	8	2	2	0	1	35	Cropland
Panapakkam	79.33	11.89	949	386	63	16	0	0	0	0	0	49	Cropland
Panappakkam	79.50	12.29	523	442	130	29	76	3	19	36	17	52	Cropland
Panappakkam	79.54	12.02	1,995	285	105	37	0	0	0	0	0	37	Cropland
Panchalam	79.67	12.27	1,831	1,026	385	38	145	9	36	20	14	43	Cropland
Panchamadevi	79.56	11.88	5,264	1,652	220	13	40	2	10	2	2	60	Cropland
Pangalathur	79.77	12.29	2,683	1,282	493	38	12	1	3	1	1	38	Unused
Panichamedu	79.93	12.14	953	428	175	41	0	0	0	0	0	40	Unused
Pantodu	79.83	12.26	439	445	134	30	82	4	21	47	18	36	Cropland
Pappambadi (Kil)	79.48	12.20	853	523	69	13	1	1	0	0	0	68	Cropland
Pappambadi (Mel)	79.25	12.26	4,041	2,115	954	45	600	11	150	37	28	45	Cropland
Pappanapattu	79.52	12.02	568	1,086	157	14	57	3	14	25	5	52	Cropland
Pappantagal	79.38	12.41	348	351	173	49	124	6	31	89	35	49	Unused
Paraiyanpattu	79.26	12.37	1,228	554	173	31	76	8	19	16	14	55	Cropland
Paraiyantagal	79.34	12.37	723	441	154	35	109	6	27	38	25	47	Cropland
Parangani	79.69	12.05	3,396	2,375	717	30	208	9	52	15	9	39	Cropland
Paranur	79.29	11.97	3,615	1,798	683	38	441	8	110	30	25	42	Cropland
Parasuredipalayam	79.59	11.86	2,399	766	80	10	0	0	0	0	0	70	Cropland
Parikkalpattu	79.66	12.11	227	973	609	63	242	3	61	267	25	62	Unused
Parugampattu	79.40	11.80	929	249	84	34	57	3	14	15	23	41	Cropland

Settlement	Location (long/lat.)		Population (nos.)	TGA (acres)	Unused area (acres)	Unused area (% of TGA)	Technical potential (acres)	Technical potential (plot nos)	Solar Capacity (MW)	Capacity per resident	Technical potential (%)	% Maximum land use	Maximum Land use type
Paruttipuram	79.32	12.44	2,973	1,472	522	35	356	5	89	30	24	50	Cropland
Pasiyar (Then)	79.61	12.20	1,592	1,607	762	47	38	2	9	6	2	47	Unused
Pasumalaitangal	79.34	12.23	784	328	86	26	0	0	0	0	0	54	Cropland
Pattanam	79.63	12.27	4,313	1,281	394	31	219	8	55	13	17	45	Cropland
Pattanur	79.79	11.97	42,613	1,767	741	42	12	1	3	0	1	41	Unused
Pavandur	79.30	11.88	2,467	610	94	15	9	3	2	1	2	49	Cropland
Pedagam	79.45	11.89	3,773	1,426	269	19	19	3	5	1	1	50	Cropland
Peddureddikuppam	79.58	11.94	471	296	42	14	6	2	2	3	2	47	Cropland
Pennagar	79.44	12.34	2,639	1,494	576	39	290	13	72	27	19	46	Cropland
Pennaivalam	79.29	11.88	3,826	1,143	277	24	137	8	34	9	12	55	Cropland
Peradikuppam	79.57	12.25	1,969	989	400	40	197	9	49	25	20	48	Cropland
Peradikuppam (Kil)	79.65	12.16	502	515	166	32	0	0	0	0	0	32	Unused
Peramandur	79.58	12.22	5,642	3,689	1,127	31	507	21	127	22	14	51	Cropland
Perambai	79.75	11.93	3,214	797	174	22	0	0	0	0	0	27	Cropland
Perampattu	79.56	12.17	21	103	14	13	0	0	0	0	0	67	Cropland
Perangiyur	79.44	11.87	2,247	1,346	169	13	15	4	4	2	1	38	Cropland
Perani	79.55	12.11	3,636	1,543	276	18	87	7	22	6	6	64	Cropland
Perapari	79.62	12.30	1,041	330	50	15	5	1	1	1	1	56	Cropland
Peravur	79.74	12.17	3,017	2,702	1,458	54	959	11	240	79	36	53	Unused
Periathatchur	79.52	12.11	5,526	3,043	842	28	525	15	131	24	17	47	Cropland
Perichanur	79.33	11.99	4,368	1,169	229	20	63	8	16	4	5	62	Cropland
Perichchambakkam	79.67	11.81	328	175	12	7	0	0	0	0	0	35	Waterbodies
Periyababusamudram	79.68	11.94	4,533	1,875	426	23	90	7	23	5	5	47	Cropland
Periyamur	79.34	12.20	758	408	34	8	0	0	0	0	0	58	Cropland
Periyanolmbai	79.34	12.43	2,677	1,081	401	37	278	13	70	26	26	52	Cropland

Settlement	Location (long/lat.)		Population (nos.)	TGA (acres)	Unused area (acres)	Unused area (% of TGA)	Technical potential (acres)	Technical potential (plot nos)	Solar Capacity (MW)	Capacity per resident	Technical potential (%)	% Maximum land use	Maximum Land use type
Perumbakkam	79.43	11.95	1,496	643	304	47	258	8	65	43	40	36	Cropland
Perumbakkam	79.66	12.09	2,196	1,226	437	36	315	11	79	36	26	47	Unused
Perumpugai	79.44	12.26	2,229	1,418	481	34	62	6	16	7	4	40	Cropland
Perumpundi	79.44	12.36	1,353	881	267	30	131	9	33	24	15	53	Cropland
Perumukkal	79.74	12.22	4,978	1,644	462	28	268	18	67	13	16	43	Cropland
Perungappur	79.36	12.23	4,084	1,544	389	25	0	0	0	0	0	50	Cropland
Perunkalapundi	79.40	12.09	1,898	772	240	31	133	9	33	18	17	47	Cropland
Peruvalur	79.40	12.41	2,259	1,872	841	45	632	8	158	70	34	44	Unused
Pettai (Gingee)	79.25	12.23	3,222	1,444	586	41	258	14	64	20	18	44	Cropland
Pidaripattu	79.51	12.14	2,355	1,091	266	24	125	9	31	13	11	52	Cropland
Pillaiyarkuppam	79.58	12.04	873	372	45	12	0	0	0	0	0	54	Cropland
Pillur	79.52	11.89	2,964	935	73	8	10	3	2	1	1	64	Cropland
Pilrampattu	79.26	12.01	3,735	601	238	40	109	4	27	7	18	48	Cropland
Pinnanur	79.36	12.43	573	710	349	49	219	10	55	96	31	49	Unused
Pombur	79.60	12.04	2,364	1,530	208	14	0	0	0	0	0	56	Cropland
Ponnampundi	79.62	12.05	113	557	109	20	0	0	0	0	0	31	Tree cover
Ponnankuppam	79.34	12.11	1,182	542	86	16	0	0	0	0	0	54	Cropland
Ponpatti	79.42	12.24	3,867	695	82	12	25	5	6	2	4	36	Cropland
Porkunam	79.38	12.30	618	324	134	41	42	1	10	17	13	53	Cropland
Porur	79.39	12.05	1,787	645	142	22	42	4	10	6	6	68	Cropland
Pothuvoy	79.26	12.15	1,637	697	197	28	41	6	10	6	6	60	Cropland
Poyyapakkam	79.52	11.96	3,297	921	249	27	89	10	22	7	10	48	Cropland
Poyyarasur	79.45	11.82	1,701	942	164	17	0	0	0	0	0	45	Cropland
Pudukuppam	79.78	12.13	1,382	796	219	28	90	5	23	16	11	45	Cropland
Pudupakkam	79.91	12.19	765	764	210	28	32	6	8	10	4	47	Cropland

Settlement	Location (long/lat.)		Population (nos.)	TGA (acres)	Unused area (acres)	Unused area (% of TGA)	Technical potential (acres)	Technical potential (plot nos)	Solar Capacity (MW)	Capacity per resident	Technical potential (%)	% Maximum land use	Maximum Land use type
Pudupalaiyam	79.28	12.03	3,328	915	380	42	176	7	44	13	19	44	Cropland
Pudupalaiyam	79.28	12.21	819	248	114	46	76	1	19	23	31	46	Unused
Puduppattu (Mel.)	79.31	12.30	2,761	1,067	358	34	209	13	52	19	20	51	Cropland
Pulaiyur	79.65	12.30	414	623	253	41	163	9	41	98	26	42	Cropland
Pulichapallam	79.76	12.03	6,454	2,866	574	20	0	0	0	0	0	31	Cropland
Pulikkal	79.21	12.04	602	340	77	23	48	2	12	20	14	52	Cropland
Pulinjimalai R.F.	79.28	12.11	70	242	72	30	0	0	0	0	0	60	Cropland
Pulivandi	79.39	12.13	2,100	767	271	35	179	8	45	21	23	47	Cropland
Puliyannur	79.56	12.31	2,445	1,549	411	27	240	11	60	25	16	53	Cropland
Pullipattu	79.28	12.22	1,663	719	242	34	136	8	34	20	19	50	Cropland
Pundi	79.47	12.05	2,175	729	195	27	112	8	28	13	15	59	Cropland
Pungunam	79.46	12.04	97	169	30	18	14	5	4	37	8	56	Cropland
Purangarai	79.70	12.30	740	568	233	41	174	4	43	59	31	41	Unused
Puthur (Ten)	79.55	12.17	209	390	54	14	0	0	0	0	0	54	Cropland
Puthurai	79.76	11.97	6,722	3,796	776	20	0	0	0	0	0	28	Tree cover
Puttagaram	79.25	12.21	1,864	731	330	45	244	6	61	33	33	45	Unused
Puttanandal	79.59	12.34	2,758	435	100	23	25	3	6	2	6	43	Cropland
Puttur (Vada)	79.48	12.28	366	576	157	27	100	4	25	68	17	45	Cropland
Puvarasankuppam	79.57	11.86	3,694	1,046	113	11	0	0	0	0	0	63	Cropland
Radhapuram	79.59	12.01	3,657	1,016	211	21	74	5	18	5	7	52	Cropland
Rajampuliyur	79.46	12.25	1,141	687	145	21	25	2	6	6	4	45	Cropland
Rampakkam	79.62	11.84	3,417	1,026	62	6	0	0	0	0	0	53	Cropland
Rayampettai	79.23	12.21	328	138	62	45	46	3	12	35	34	50	Cropland
Rayanallur	79.86	12.26	911	664	220	33	82	4	21	23	12	34	Cropland
Rayattai	79.79	12.05	268	758	86	11	0	0	0	0	0	34	Cropland

Settlement	Location (long/lat.)		Population (nos.)	TGA (acres)	Unused area (acres)	Unused area (% of TGA)	Technical potential (acres)	Technical potential (plot nos)	Solar Capacity (MW)	Capacity per resident	Technical potential (%)	% Maximum land use	Maximum Land use type
Reddikuppam	79.58	12.04	111	262	47	18	0	0	0	0	0	54	Cropland
Rettanai	79.55	12.20	7,604	3,629	705	19	103	11	26	3	3	49	Cropland
Royapudupakkam	79.80	12.03	1,464	1,687	329	20	0	0	0	0	0	33	Tree cover
S. Kolapakkam	79.45	12.12	2,092	524	82	16	32	4	8	4	6	46	Cropland
Salai	79.58	12.26	1,567	680	189	28	25	4	6	4	4	55	Cropland
Salai (Vikravandi)	79.55	12.07	3,893	1,400	509	36	184	5	46	12	13	38	Cropland
Salai (Vikravandi) R.F.	79.54	12.07	42	164	62	38	0	1	0	0	0	49	Cropland
Salaiagaram	79.53	11.94	5,333	375	101	27	16	4	4	1	4	34	Cropland
Salamedu	79.49	11.92	27,982	2,024	566	28	153	11	38	1	8	27	Unused
Salavadi	79.67	12.25	3,837	1,128	382	34	47	4	12	3	4	48	Cropland
Salavanur	79.39	12.10	831	527	86	16	51	7	13	15	10	76	Cropland
Salayampalayam (East)	79.56	11.90	6,995	2,545	197	8	0	0	0	0	0	59	Cropland
Samathankuppam	79.40	12.35	557	471	85	18	26	3	6	12	6	40	Cropland
Sandisakshi	79.41	12.32	836	483	136	28	3	1	1	1	1	47	Cropland
Sangilikuppam	79.32	12.38	2,761	1,085	497	46	391	9	98	35	36	46	Cropland
Sangitamanagalam	79.39	12.11	5,497	760	147	19	66	9	16	3	9	64	Cropland
Saram	79.70	12.28	5,981	2,602	1,038	40	272	13	68	11	10	39	Unused
Saravanapakkam	79.37	11.84	774	125	22	18	0	0	0	0	0	61	Cropland
Sathambadi	79.35	12.37	3,300	1,556	555	36	374	10	94	28	24	41	Cropland
Sathanandal	79.42	12.34	775	610	178	29	0	1	0	0	0	53	Cropland
Sathanur	79.40	11.89	60	244	36	15	14	1	4	59	6	59	Cropland
Sathiyakandanur	79.31	12.00	2,651	761	234	31	151	4	38	14	20	56	Cropland
Sattamangalam	79.83	12.19	627	277	95	34	0	0	0	0	0	36	Cropland
Sattanur	79.68	12.28	978	662	244	37	154	11	38	39	23	54	Cropland
Sattanur	79.52	12.03	4,197	2,031	489	24	247	20	62	15	12	36	Unused

Settlement	Location (long/lat.)		Population (nos.)	TGA (acres)	Unused area (acres)	Unused area (% of TGA)	Technical potential (acres)	Technical potential (plot nos)	Solar Capacity (MW)	Capacity per resident	Technical potential (%)	% Maximum land use	Maximum Land use type
Sattaputhur	79.35	12.32	1,028	981	294	30	136	14	34	33	14	56	Cropland
Sattipattu	79.43	11.92	443	211	36	17	7	1	2	4	3	51	Cropland
Satyamangalam	79.31	12.24	8,029	2,916	801	27	287	16	72	9	10	48	Cropland
Semangalam	79.71	12.07	4,248	2,951	864	29	98	9	25	6	3	46	Cropland
Semangalam	79.47	11.83	1,112	288	48	17	0	0	0	0	0	44	Cropland
Sembakkam	79.54	12.36	863	708	253	36	181	5	45	52	26	47	Cropland
Semmar	79.41	11.88	1,437	488	59	12	29	5	7	5	6	71	Cropland
Semmedu	79.28	12.25	7,576	2,056	712	35	353	13	88	12	17	57	Cropland
Semmedu	79.40	12.04	2,216	813	195	24	89	6	22	10	11	46	Cropland
Senalur	79.76	12.23	790	564	221	39	143	4	36	45	25	39	Unused
Sendamangalam	79.81	12.26	1,392	610	89	15	10	2	2	2	2	52	Cropland
Sendiyampakkam	79.54	12.13	1,078	853	98	12	1	2	0	0	0	65	Cropland
Sengadu	79.59	11.96	2,092	816	229	28	100	5	25	12	12	54	Cropland
Sengamedu	79.29	12.02	2,048	674	241	36	136	5	34	17	20	51	Cropland
Sengamedu	79.67	12.02	588	485	49	10	0	0	0	0	0	53	Cropland
Senji kunnathur	79.46	12.14	1,789	1,228	417	34	261	15	65	37	21	54	Cropland
Senjikoathamangalam	79.54	12.15	1,798	894	320	36	233	4	58	32	26	36	Cropland
Senjipudur	79.44	12.13	1,652	894	371	42	248	8	62	37	28	44	Cropland
Sennakunam	79.35	11.97	4,801	1,681	314	19	17	2	4	1	1	56	Cropland
Sennalur	79.36	12.19	732	517	76	15	0	0	0	0	0	54	Cropland
Serdanur	79.53	11.87	2,962	781	158	20	15	2	4	1	2	49	Cropland
Servilagam	79.48	12.26	862	316	65	20	10	1	2	3	3	53	Cropland
Seshanganur	79.65	11.96	1,806	420	55	13	0	0	0	0	0	44	Cropland
Settavarai	79.25	12.16	975	709	228	32	28	3	7	7	4	39	Cropland
Seturayanallur	79.47	12.30	653	692	177	26	46	10	11	18	7	54	Cropland

Settlement	Location (long/lat.)		Population (nos.)	TGA (acres)	Unused area (acres)	Unused area (% of TGA)	Technical potential (acres)	Technical potential (plot nos)	Solar Capacity (MW)	Capacity per resident	Technical potential (%)	% Maximum land use	Maximum Land use type
Sevalambadi (Kil)	79.40	12.38	671	452	145	32	68	7	17	25	15	54	Cropland
Sevalapurai	79.36	12.29	6,261	2,615	653	25	214	19	54	9	8	51	Cropland
Sevur (Mel)	79.51	12.20	3,269	3,826	911	24	407	33	102	31	11	61	Cropland
Seyyaduvinnan	79.59	11.99	2,299	362	43	12	12	3	3	1	3	50	Cropland
Seyyankuppam	79.90	12.13	502	412	48	12	0	0	0	0	0	29	Tree cover
Sindagampoondi	79.35	12.38	1,306	605	193	32	105	11	26	20	17	52	Cropland
Sindipattu	79.31	12.36	418	360	81	22	33	2	8	20	9	53	Cropland
Singanandai	79.83	12.20	940	271	73	27	0	0	0	0	0	27	Unused
Singanikuppam	79.62	12.37	241	242	69	29	34	4	8	35	14	55	Cropland
Singanur	79.62	12.21	3,310	1,362	413	30	0	1	0	0	0	39	Cropland
Singavaram	79.41	12.28	1,602	990	252	25	42	8	10	6	4	52	Cropland
Sirudalaipoondi	79.34	12.35	2,943	1,118	331	30	171	10	43	15	15	57	Cropland
Sirumadurai	79.36	11.90	3,027	1,121	147	13	36	5	9	3	3	42	Cropland
Sirunampundi	79.39	12.20	1,472	713	104	15	2	2	0	0	0	51	Cropland
Sirunarur	79.67	12.10	485	966	374	39	40	8	10	20	4	38	Unused
Siruvadi	79.84	12.21	5,078	1,512	473	31	248	17	62	12	16	45	Cropland
Siruvadi R.F.	79.37	12.27	496	3,396	429	13	0	0	0	0	0	60	Tree cover
Siruvai	79.61	12.05	1,227	903	50	6	0	0	0	0	0	50	Cropland
Siruvakkur	79.38	11.94	3,796	1,373	427	31	208	5	52	14	15	59	Cropland
Siruvalai	79.42	12.04	3,754	1,851	592	32	398	14	99	27	22	52	Cropland
Siruvallikuppam	79.57	12.00	1,842	526	139	26	89	5	22	12	17	59	Cropland
Siruvalur (Ten)	79.70	12.12	1,938	1,288	222	17	0	0	0	0	0	39	Tree cover
Siruvalur (Vada)	79.58	12.33	1,680	1,350	430	32	278	13	69	41	21	52	Cropland
Siruvandadu	79.59	11.88	2,577	980	124	13	6	1	2	1	1	57	Cropland
Siruvanur	79.38	11.90	1,476	799	85	11	23	5	6	4	3	64	Cropland

Settlement	Location (long/lat.)		Population (nos.)	TGA (acres)	Unused area (acres)	Unused area (% of TGA)	Technical potential (acres)	Technical potential (plot nos)	Solar Capacity (MW)	Capacity per resident	Technical potential (%)	% Maximum land use	Maximum Land use type
Sithalingamadam	79.28	11.92	8,253	2,219	534	24	345	20	86	10	16	53	Cropland
Sithanangur	79.40	11.81	1,281	577	92	16	28	4	7	6	5	52	Cropland
Sithathur	79.31	12.01	1,702	460	116	25	57	8	14	8	12	65	Cropland
Sitheri	79.41	12.05	1,067	369	77	21	37	6	9	9	10	64	Cropland
Sitheripattu	79.35	11.99	1,446	529	89	17	17	3	4	3	3	70	Cropland
Sittampundi	79.41	12.19	2,325	953	176	18	16	3	4	2	2	58	Cropland
Sitteripattu	79.67	12.28	715	242	39	16	8	4	2	3	3	52	Cropland
Siyappundi	79.31	12.31	1,271	565	224	40	171	5	43	34	30	47	Cropland
Soliasokkulam	79.59	12.16	665	272	50	18	0	0	0	0	0	54	Cropland
Sorapattu	79.83	12.16	203	127	73	58	0	0	0	0	0	57	Unused
Sorappur	79.64	11.84	1,454	813	37	5	13	2	3	2	2	64	Cropland
Sorattupperiyankuppam	79.30	12.21	3,884	2,124	679	32	218	10	55	14	10	48	Cropland
Sorattur	79.46	12.21	2,221	1,344	369	27	91	6	23	10	7	46	Cropland
Sornavur (Kilpadi)	79.64	11.82	1,651	1,049	37	4	0	0	0	0	0	74	Cropland
Sornavur (Melpadi)	79.63	11.82	1,538	1,139	78	7	0	0	0	0	0	43	Cropland
Surappattu	79.43	12.01	2,189	390	116	30	12	2	3	1	3	57	Cropland
T. Edaiyur	79.34	11.90	3,012	1,783	176	10	16	2	4	1	1	44	Waterbodies
T. Konalavadi	79.26	11.87	1,928	772	256	33	163	4	41	21	21	46	Cropland
T. Kunnathur	79.28	11.90	1,566	436	164	38	109	8	27	17	25	47	Cropland
T. Nellalam	79.75	12.20	2,658	926	338	36	187	10	47	18	20	36	Unused
T. Parangani	79.77	12.14	2,794	1,036	284	27	71	3	18	6	7	49	Cropland
T.Kumaramangalam	79.45	11.83	788	390	59	15	0	0	0	0	0	39	Cropland
T.Pudupalayam	79.30	11.91	4,172	1,591	256	16	90	9	22	5	6	49	Cropland
Tachchampattu	79.38	12.18	1,489	1,243	395	32	0	0	0	0	0	39	Cropland
Tadagam	79.26	12.15	1,446	835	295	35	54	4	14	9	6	43	Cropland

Settlement	Location (long/lat.)		Population (nos.)	TGA (acres)	Unused area (acres)	Unused area (% of TGA)	Technical potential (acres)	Technical potential (plot nos)	Solar Capacity (MW)	Capacity per resident	Technical potential (%)	% Maximum land use	Maximum Land use type
Tadanguppam	79.23	12.21	296	345	151	44	122	8	31	103	35	49	Cropland
Tailapuram	79.76	12.09	4,588	2,548	376	15	0	0	0	0	0	42	Cropland
Taiyur	79.48	12.21	1,393	838	188	22	64	8	16	12	8	65	Cropland
Talaiganikuppam	79.82	12.15	742	740	454	61	84	1	21	28	11	61	Unused
Talankunram	79.26	12.39	3,936	1,673	572	34	319	16	80	20	19	54	Cropland
Taludali	79.64	12.10	2,708	896	457	51	348	3	87	32	39	50	Unused
Tandavasamudram	79.34	12.15	4,032	2,036	521	26	55	5	14	3	3	55	Cropland
Tandavasamudram R.F.	79.35	12.13	157	793	225	28	0	1	0	0	0	41	Cropland
Taniyal	79.56	12.32	1,078	1,373	547	40	425	12	106	99	31	39	Cropland
Tayanur	79.30	12.33	4,398	2,765	703	25	457	17	114	26	17	42	Cropland
Teli	79.40	11.92	3,019	868	239	27	153	8	38	13	18	61	Cropland
Tengapakkam	79.68	12.32	125	163	82	50	70	2	18	140	43	50	Unused
Tennalapakkam	79.62	12.10	1,718	1,247	541	43	0	0	0	0	0	43	Unused
Tennamadevi	79.48	11.99	3,768	774	261	34	49	4	12	3	6	53	Cropland
Tennampundi	79.79	12.23	539	369	111	30	0	0	0	0	0	45	Cropland
Tennavarayanbattu	79.60	11.98	1,344	384	51	13	0	0	0	0	0	66	Cropland
Tenneri	79.73	12.18	63	187	81	43	45	5	11	179	24	43	Unused
Tenpair	79.49	12.09	5,707	2,459	501	20	257	27	64	11	10	52	Cropland
Tenpalai	79.32	12.27	5,112	1,993	475	24	181	10	45	9	9	53	Cropland
Tenpuduppattu	79.44	12.18	1,881	990	308	31	41	5	10	6	4	44	Cropland
Teppirampattu	79.29	12.43	3,741	1,279	356	28	215	7	54	14	17	52	Cropland
Terkunam	79.72	12.12	1,959	1,093	361	33	0	0	0	0	0	33	Cropland
Thaduthatkondur	79.38	11.84	2,055	1,313	230	18	4	1	1	0	0	57	Cropland
Thandarai	79.25	12.07	633	966	474	49	6	1	2	2	1	49	Unused
Thanikelampattu	79.29	11.98	1,536	432	108	25	50	4	12	8	12	52	Cropland

Settlement	Location (long/lat.)		Population (nos.)	TGA (acres)	Unused area (acres)	Unused area (% of TGA)	Technical potential (acres)	Technical potential (plot nos)	Solar Capacity (MW)	Capacity per resident	Technical potential (%)	% Maximum land use	Maximum Land use type
Thenkulapakkam	79.63	12.12	2,056	824	264	32	115	4	29	14	14	32	Cropland
Thenmangalam	79.42	11.85	1,660	875	136	15	31	3	8	5	4	62	Cropland
Thirukkunam	79.38	12.07	3,089	682	183	27	69	5	17	6	10	54	Cropland
Thirumalaipattu	79.23	12.01	979	301	116	39	92	2	23	23	30	46	Cropland
Thirunandipuram	79.48	12.13	748	671	244	36	162	8	40	54	24	54	Cropland
Thiruvadikunnam	79.44	12.16	1,350	648	188	29	124	7	31	23	19	53	Cropland
Thiruvamattur	79.47	11.97	4,710	1,516	369	24	100	6	25	5	7	46	Cropland
Thiruvambattu	79.47	12.19	932	818	222	27	96	6	24	26	12	51	Cropland
Thiruvonnainallur	79.37	11.87	9,394	1,667	217	13	33	4	8	1	2	38	Cropland
Thruinjikadu RF	79.29	12.06	0	153	88	58	0	2	0	0	0	57	Unused
Thumbur	79.48	12.02	5,957	1,646	436	26	254	18	64	11	15	52	Cropland
Thurinjikkadu R.F.	79.29	12.08	747	378	191	50	0	0	0	0	0	50	Unused
Tindivanam	79.65	12.24	50,266	5,447	1,551	28	295	14	74	1	5	31	Cropland
Tiruchitrambalam	79.78	11.99	13,609	2,076	507	24	0	0	0	0	0	30	Tree cover
Tirukanur	79.90	12.18	727	521	171	33	20	3	5	7	4	44	Cropland
Tirumangalam	79.65	11.99	6,900	1,258	132	11	10	1	3	0	1	47	Cropland
Tiruppachchanur	79.50	11.87	2,022	1,236	132	11	0	0	0	0	0	40	Cropland
Tiruvaikkarai	79.65	12.03	3,374	1,889	903	48	137	2	34	10	7	47	Unused
Todandanur	79.53	11.93	3,906	317	154	48	15	3	4	1	5	48	Unused
Tokavadi	79.45	11.93	1,302	144	50	35	0	1	0	0	0	37	Cropland
Tollamur	79.67	12.05	1,227	1,110	523	47	81	5	20	16	7	47	Unused
Tondur	79.48	12.36	1,110	1,100	324	29	53	6	13	12	5	40	Cropland
Torappadi	79.33	12.31	1,933	720	294	41	218	10	54	28	30	50	Cropland
Toravi	79.56	12.01	6,608	1,584	276	17	128	10	32	5	8	58	Cropland
Toruvai	79.78	12.03	299	589	135	23	0	0	0	0	0	30	Tree cover

Settlement	Location (long/lat.)		Population (nos.)	TGA (acres)	Unused area (acres)	Unused area (% of TGA)	Technical potential (acres)	Technical potential (plot nos)	Solar Capacity (MW)	Capacity per resident	Technical potential (%)	% Maximum land use	Maximum Land use type
Tuduppakkam	79.48	12.23	775	561	107	19	29	5	7	9	5	66	Cropland
Turinjippundi	79.36	12.31	1,446	692	196	28	75	6	19	13	11	58	Cropland
Tuttipattu	79.34	12.12	2,630	1,062	170	16	12	2	3	1	1	56	Cropland
Udaiyanatham	79.33	12.05	845	796	179	22	0	0	0	0	0	39	Cropland
Udaiyanattam R.F.	79.33	12.06	1,989	1,366	234	17	0	0	0	0	0	38	Cropland
Udaiyantangal	79.42	12.40	2,094	688	252	37	169	8	42	20	25	52	Cropland
Uliyampattu	79.24	12.15	200	314	143	45	97	6	24	121	31	45	Unused
Unnamanandal	79.31	12.40	1,028	611	199	33	130	10	33	32	21	59	Cropland
Uppuvelur	79.79	12.13	2,293	2,502	825	33	277	13	69	30	11	50	Cropland
Ural	79.63	12.29	2,520	927	324	35	188	12	47	19	20	56	Cropland
Urani	79.91	12.16	1,154	1,595	561	35	5	1	1	1	0	35	Unused
Uranitangal	79.44	12.25	2,116	519	241	46	1	1	0	0	0	46	Unused
V. Nallalam	79.52	12.16	1,012	752	184	24	106	4	26	26	14	59	Cropland
V. Panchalam	79.52	12.14	648	890	281	32	169	7	42	65	19	47	Cropland
V. Pudupakkam	79.71	12.02	2,033	1,722	170	10	0	0	0	0	0	55	Cropland
V.Chithampur	79.27	11.99	3,298	1,030	232	22	90	10	23	7	9	65	Cropland
V.Pudur	79.61	11.94	2,189	1,523	176	12	0	0	0	0	0	57	Cropland
V.Puthur	79.27	11.97	1,431	746	169	23	84	8	21	15	11	67	Cropland
Vadagarathayanur	79.24	12.00	4,428	1,756	870	50	702	7	175	40	40	49	Unused
Vadakkunemili	79.24	11.94	1,596	585	136	23	15	3	4	2	3	39	Cropland
Vadamalaiyanur	79.23	11.89	3,035	970	347	36	245	4	61	20	25	48	Cropland
Vadamarudur	79.26	11.93	4,624	1,493	309	21	146	14	36	8	10	55	Cropland
Vadampundi	79.61	12.31	878	671	219	33	95	6	24	27	14	53	Cropland
Vadanur	79.63	11.96	42	110	6	5	0	0	0	0	0	74	Cropland
Vadanur	79.63	11.96	125	136	8	6	0	0	0	0	0	70	Cropland

Settlement	Location (long/lat.)		Population (nos.)	TGA (acres)	Unused area (acres)	Unused area (% of TGA)	Technical potential (acres)	Technical potential (plot nos)	Solar Capacity (MW)	Capacity per resident	Technical potential (%)	% Maximum land use	Maximum Land use type
Vadapalai	79.33	12.29	2,308	1,035	357	35	254	9	63	28	25	55	Cropland
Vadataram	79.48	12.19	523	457	127	28	46	6	12	22	10	58	Cropland
Vadavambalam	79.57	11.85	2,111	896	86	10	0	0	0	0	0	36	Tree cover
Vadavanur	79.47	12.26	174	226	30	13	11	2	3	16	5	45	Cropland
Vadavetti	79.38	12.39	1,602	921	368	40	304	10	76	47	33	40	Cropland
Vaduganathankuppam	79.58	11.96	305	352	207	59	182	1	45	149	52	58	Unused
Vaduganpoondi	79.25	12.35	2,935	1,101	434	39	277	23	69	24	25	46	Cropland
Vaidapakkam	79.83	12.23	1,931	962	204	21	78	8	20	10	8	62	Cropland
Vailamur	79.43	11.96	540	377	169	45	99	7	25	46	26	44	Unused
Vailamur (Kil)	79.50	12.15	1,050	1,019	308	30	177	7	44	42	17	45	Cropland
Vailamur (Mel)	79.27	12.42	9,364	3,871	1,563	40	1,104	27	276	29	29	51	Cropland
Vairapuram	79.66	12.31	3,208	2,130	872	41	496	8	124	39	23	40	Unused
Vakkur	79.57	11.97	4,280	2,884	610	21	303	14	76	18	11	58	Cropland
Valaiyampattu	79.43	11.87	14	203	10	5	0	1	0	5	0	69	Cropland
Valappattu	79.42	12.01	1,815	332	105	32	20	1	5	3	6	59	Cropland
Valathi	79.37	12.34	5,721	2,500	848	34	544	11	136	24	22	43	Cropland
Valavanur	79.60	11.91	15,487	2,854	385	13	7	3	2	0	0	61	Cropland
Vallam	79.51	12.25	1,681	958	179	19	21	3	5	3	2	52	Cropland
Valudavur	79.71	11.98	3,786	1,411	222	16	0	0	0	0	0	51	Cropland
Valudureddi	79.47	11.92	12,924	1,500	520	35	140	9	35	3	9	34	Unused
Vanakkambadi	79.41	12.30	453	278	118	43	88	6	22	49	32	45	Cropland
Vandarampundi	79.79	12.24	226	287	39	14	0	0	0	0	0	27	Tree cover
Vanniper	79.79	12.18	3,837	1,839	393	21	68	6	17	4	4	55	Cropland
Vanur	79.73	12.03	6,295	3,354	622	19	0	0	0	0	0	44	Cropland
Varagapattu	79.67	12.19	639	179	48	27	3	1	1	1	1	39	Cropland

Settlement	Location (long/lat.)		Population (nos.)	TGA (acres)	Unused area (acres)	Unused area (% of TGA)	Technical potential (acres)	Technical potential (plot nos)	Solar Capacity (MW)	Capacity per resident	Technical potential (%)	% Maximum land use	Maximum Land use type
Varikkal	79.39	12.15	3,074	844	200	24	85	6	21	7	10	55	Cropland
Vasanthkrishnapuram	79.19	12.02	3,208	851	282	33	87	7	22	7	10	44	Cropland
Vedalam	79.28	12.01	482	615	143	23	63	6	16	33	10	68	Cropland
Vedambattu	79.45	11.95	706	301	98	32	67	5	17	24	22	39	Cropland
Vedandavadi	79.20	12.34	404	316	113	36	71	7	18	44	22	52	Cropland
Veeranampattu	79.28	11.89	120	295	101	34	63	5	16	131	21	54	Cropland
Veerangipuram	79.28	12.05	3,871	1,418	702	49	64	6	16	4	5	49	Unused
Veerapandi	79.21	12.05	7,290	2,679	798	30	493	15	123	17	18	51	Cropland
Veerashozhapuram	79.30	11.95	3,841	1,732	431	25	261	17	65	17	15	58	Cropland
Velakulam	79.18	12.02	1,491	746	390	52	301	3	75	50	40	52	Unused
Velangampadi	79.59	12.13	1,429	1,359	380	28	105	1	26	18	8	49	Cropland
Veliyambakkam	79.46	11.88	933	245	43	18	0	0	0	0	0	36	Waterbodies
Veliyandal	79.45	12.06	1,358	280	65	23	28	3	7	5	10	45	Cropland
Veliyanur	79.65	12.13	2,390	1,499	450	30	198	12	50	21	13	34	Cropland
Vellamputhur	79.22	12.01	1,491	501	123	25	65	3	16	11	13	61	Cropland
Vellayaimbattu	79.36	12.08	2,036	750	161	21	6	2	2	1	1	34	Cropland
Velleripattu	79.39	12.05	249	265	53	20	7	1	2	7	3	46	Cropland
Vellimedupettai	79.58	12.35	484	527	69	13	32	4	8	16	6	57	Cropland
Vembi	79.47	12.07	5,970	872	298	34	215	10	54	9	25	48	Cropland
Vempundi	79.61	12.24	2,295	973	317	33	80	6	20	9	8	46	Cropland
Vengai	79.66	12.16	602	877	395	45	0	0	0	0	0	45	Unused
Vengamur	79.35	12.06	1,621	775	239	31	99	7	25	15	13	52	Cropland
Vengandur	79.55	12.23	4,272	1,656	483	29	269	16	67	16	16	56	Cropland
Vengandur	79.43	11.99	3,782	1,636	202	12	57	8	14	4	3	69	Cropland
Vengaram	79.84	12.15	598	582	168	29	4	2	1	2	1	54	Cropland

Settlement	Location (long/lat.)		Population (nos.)	TGA (acres)	Unused area (acres)	Unused area (% of TGA)	Technical potential (acres)	Technical potential (plot nos)	Solar Capacity (MW)	Capacity per resident	Technical potential (%)	% Maximum land use	Maximum Land use type
Vengatadriagaram	79.54	11.88	5,846	1,472	162	11	58	5	15	3	4	67	Cropland
Vengayakuppam	79.44	12.08	166	189	80	42	64	1	16	96	34	48	Cropland
Venkatesapuram	79.43	11.94	734	824	227	28	110	10	27	37	13	36	Cropland
Venmaniyathur	79.61	12.27	1,893	822	249	30	180	15	45	24	22	53	Cropland
Venmaniyathur	79.41	11.92	1,456	625	148	24	77	5	19	13	12	59	Cropland
Vepperi	79.83	12.21	326	411	121	29	42	6	11	32	10	44	Cropland
Vettavalam	79.26	12.08	15	127	15	12	0	0	0	0	0	50	Tree cover
Vettukkadu	79.57	12.01	2,036	774	272	35	181	8	45	22	23	53	Cropland
Vidur	79.60	12.08	5,314	3,379	588	17	8	1	2	0	0	35	Cropland
Vijankuppam	79.42	12.07	471	442	48	11	9	1	2	5	2	82	Cropland
Vikravandi	79.54	12.04	17,454	3,056	864	28	284	11	71	4	9	36	Cropland
Vikravandi R.F.	79.54	12.06	111	136	52	39	0	1	0	0	0	39	Waterbodies
Villivalam	79.25	11.88	1,439	337	72	22	28	3	7	5	8	61	Cropland
Villupuram	79.48	11.95	3,629	677	143	21	15	2	4	1	2	31	Waterbodies
Vilukkam	79.53	12.26	3,097	1,851	432	23	106	13	27	9	6	48	Cropland
Viluppuram	79.50	11.94	58,568	2,122	474	22	3	1	1	0	0	46	Built up
Vilvamadevi	79.48	12.16	157	163	43	27	21	3	5	34	13	65	Cropland
Vilvanatham	79.81	12.09	650	1,588	894	56	180	4	45	69	11	56	Unused
Viramanallur	79.28	12.24	1,724	609	154	25	35	4	9	5	6	62	Cropland
Viramur	79.41	12.02	2,881	1,385	291	21	74	6	19	6	5	61	Cropland
Viranam	79.66	11.84	3,444	1,743	93	5	1	1	0	0	0	54	Cropland
Viranamur	79.51	12.33	2,331	1,670	437	26	159	13	40	17	10	53	Cropland
Virattikuppam	79.47	11.95	1,579	432	93	22	27	4	7	4	6	41	Cropland
Virpattu	79.47	12.29	583	450	123	27	63	9	16	27	14	51	Cropland
Vittalapuram	79.70	12.25	2,282	1,750	577	33	418	9	105	46	24	49	Cropland
Vowalkunram	79.47	12.15	35	117	2	2	0	0	0	0	0	76	Cropland

Links to interactive maps:

- <https://www.aurovilleconsulting.com/wp-content/uploads/Lila/Villupuram/Solar/Features.html>
- <https://www.aurovilleconsulting.com/wp-content/uploads/Lila/Villupuram/Solar/Landcover.html>
- <https://www.aurovilleconsulting.com/wp-content/uploads/Lila/Villupuram/Solar/Landsuitability.html>
- <https://www.aurovilleconsulting.com/wp-content/uploads/Lila/Villupuram/Solar/Competinguse.html>
- <https://www.aurovilleconsulting.com/wp-content/uploads/Lila/Villupuram/Solar/top15lands.html>
- <https://www.aurovilleconsulting.com/wp-content/uploads/Lila/Villupuram/Solar/Settlement-level.html>

